



OKB

JAPAN

CASTOR & WHEEL



軽くて、丈夫!
サビにも強い

ファッションなカラー4タイプ



ブラック ブルー グリーン レッド



It's
Plastics
プラスチック製だから

ポータブルキャリアー



OSAKA KYODO BOEKI LTD, JAPAN
PRINTED IN JAPAN (1993)

INDEX

MEDIUM • HEAVY • DUTY – Industrial Use		MEDIUM • DUTY – Medical & Kitchen Use	
Wheel Series	2 – 4	TM • KM – Top Plate	23
J & K Series	4 – 8	SM Screw Stem	24
JB & KB Series	9	GM Expanding Stem	25 – 26
JS & JKT Series	10	LIGHT • MEDIUM – General Use	
S Series	11 – 12	F Series	27 – 28
JX & KX	13	E Series	29 – 30
JM & KH	14	GR Series	31
T Series	15	M Series	32 – 35
ET & KD	16	FURNITURE CASTOR – General Use	
HAND TRUCK • WHEEL BARROW		N Series – Nylon Twin Castor	36
Plastic Handtruck	17	B Series – BG • BA • BC	37
Foldable Handtruck	18	B Series – BF • BD • BTF	38
Wheel-Barrow	18		
Prestar Handtruck	19 & 20		
Handtruck Specifications	21		
Handtruck Castor	22		

• PROPERTIES OF MATERIALS – ⊙ Super ○ Excellent ◯ Good Δ Fairly good X No good

MATERIAL	STANDARD RUBBER (PR)	STYRENE RUBBER (SBR)	BUTADIENE RUBBER (PBR)	CHLOROPRILNE RUBBER (CR)	NITRILE RUBBER (NBR)	HYPERLON RUBBER (CSM)	URETHANE RUBBER (PU)	CAST IRON (CA)	NYLON 6 (NP)	PHENOLIC (HP)	POLY PROPYLENE (PP)
PRINCIPAL CHARACTERISTICS	Feature use in general conditions for medium heavy-weight	Better resistance to wear & aging than natural rubber low cost	Features use for non-marking cold resistance 40°C below freezing point	Heat resistance 120°C for such characteristics such as resistance to acid, ozone & chemical	Features good resistance to oil, wear and aging	Features good weather ability and resistance to aging, ozone, chemical & wear	Features exceptionally good mechanical characteristics in all	Heat & cold resistance Long durability	Effective against chemical & mechanical characteristics	Features for heavy load and long durability	Features use in general conditions for Medium heavy weight
Specific Gravity	0.92	0.92 – 0.94	0.91 – 0.94	1.15 – 1.25	1.00 – 1.20	1.11 – 1.18	1.00 – 1.30	-	1.12 – 1.14	1.32 – 1.45	0.90
Resistancy	⊙	○	⊙	⊙	○	○	⊙	-	-	-	-
Tearing	⊙	Δ	○	○	○	○	⊙	⊙	⊙	⊙	⊙
Wear Resistance	⊙	⊙	⊙	○ – ⊙	⊙	⊙	⊙	⊙	⊙	⊙	⊙
Heat Resistance	70° – 80°	120°C	80°C	120°C	130°C	150°C	60°C	150°C	70°C	120°C	70°C
Cold Resistance	-5°	-30° – 60°	-40°C	-5°C	-10° – 20°	-20° – 60°	-30°C	-40°C	-40°C	-40°	-5°C
Aging Resistance	○	⊙	○	⊙	⊙	⊙	○	⊙	⊙	⊙	⊙
Weatherability	○	○	○	○	○	⊙	○	⊙	⊙	⊙	⊙
Ozone Resistance	X	X	X	⊙	X	⊙	⊙	⊙	⊙	⊙	⊙
Gazoline/kerosene	X	X	X	○	⊙	○	⊙	⊙	⊙	⊙	○
Weak Acid	X	X	X	Δ	Δ	Δ	X	⊙	○	○	○
Strong Acid	X	X	X	X	X	X	X	⊙	X	X	Δ
Weak Alkal	X	X	X	X	X	X	X	⊙	⊙	Δ	⊙
Strong Alkal	X	X	X	X	X	X	X	⊙	⊙	X	⊙
Solvents	-	-	-	-	-	-	○	○	○	○	○
Tensile strength (kg/cm)	-	-	-	-	-	-	350 – 560	-	490 – 840	460 – 700	300 – 390
Elongation (%)	-	-	-	-	-	-	200 – 450	-	25 – 320	0.4 – 0.8	200 – 700
Rockwell Hardness	-	-	-	-	-	-	No Destruction M28 – R60	-	5.5 – 19.6 R103 – R118	1.3 – 3.3 M96 – m120	No Destruction R85 – 110
Moisture Absorption Ratio (%/24h)	-	-	-	-	-	-	-	-	1.6	0.3 – 0.7	<0.01
Combustibility (speed)	-	-	-	-	-	-	slow	-	Self-Extinguishing	Extremely slow	slow
Continuous Heat Resistance	-	-	-	-	-	-	88	-	79 – 121	175 – 180	120 – 160

WHEELS

FOR INDUSTRIAL USE

RUBBER WHEEL



PR

▶ PR型 - Pressed Steel Rim ● Rubber Tyre (Ball Bearing) -50°C ~ 80°C

Specifications 寸法図	Model No.	Bearings Parts	Load Cap (kg)		Dimensions (m/m)				Weight (grams)
			Safety	Yielding	W	d	B	D1	
	PR-75	200B	120	240	32	10	35	56	200
	PR-100	201B	160	320	35	12	38	76	400
	PR-130	204B	240	480	42	20	52	104	750
	PR-150	204B	270	540	45	20	55	123	1000
	PR-180	204B	300	600	45	20	55	151	1400
	PR-200	204B	350	700	45	20	55	170	1580
	PR-250	205B	400	800	50	25	62	210	3400
	PR-300	205B	480	960	50	25	71	250	4800

RUBBER WHEEL



CR

▶ CR型 - Pressed Steel Rim ● Special Rubber (Ball Bearing) Heat Resistant 120°C

Specifications 寸法図	Model No.	Bearings Parts	Load Cap (kg)		Dimensions (m/m)				Weight (grams)
			Safety	Yielding	W	d	B	D1	
	CR-75	200B	110	220	32	10	35	56	200
	CR-100	201B	150	300	35	12	38	76	400
	CR-130	204B	230	460	42	20	52	104	750
	CR-150	204B	250	500	45	20	55	123	1000
	CR-180	204B	280	560	45	20	55	151	1400
	CR-200	204B	300	600	45	20	55	170	1580
	CR-250	205B	380	760	50	25	62	210	3400
	CR-300	205B	450	900	50	25	71	250	4800

Butadiene (Non-marking)



PBR

▶ PBR型 - Pressed Steel Rim ● Rubber Tyre (Ball Bearing) Non-Marking Grey & Cold Resistant -40°C

Specifications 寸法図	Model No.	Bearings Parts	Load Cap (kg)		Dimensions (m/m)				Weight (grams)
			Safety	Yielding	W	d	B	D1	
	PBR-75	200B	130	260	32	10	35	56	200
	PBR-100	201B	170	340	35	12	38	76	400
	PBR-130	204B	260	520	42	20	52	104	750
	PBR-150	204B	300	600	45	20	55	123	1000
	PBR-180	204B	330	660	45	20	55	151	1400
	PBR-200	204B	380	760	45	20	55	170	1580
	PBR-250	205B	430	860	50	25	62	210	3400
	PBR-300	205B	530	1060	50	25	71	250	4800

RUBBER WHEEL



NR


▶ NR型 - Nylon-Core ● Rubber Tyre (Plain Bearing) Resistant to Corrosion

Specifications 寸法図	Model No.	Bearings Parts	Load Cap (kg)		Dimensions (m/m)				Weight (grams)
			Safety	Yielding	W	d	B	D1	
	NR-75	Plain	90	180	32	10	35	56	130
	NR-100	Plain	130	260	35	12	38	76	220
	NR-130	Plain	210	420	42	20	52	104	400
	NR-150	Plain	220	440	45	20	55	123	550
	NR-200	Plain	280	560	45	20	55	170	900

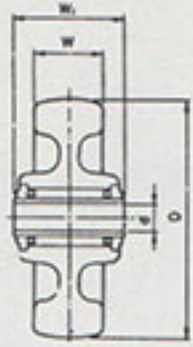
WHEELS FOR INDUSTRIAL USE

NYLON WHEEL

NP型 - Nylon 6 (Plain Bearing) Resistant to Corrosion -40°C ~ 70°C




NP

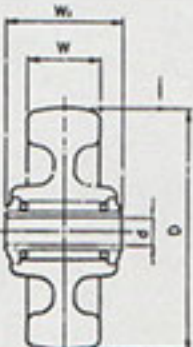
Specifications 寸法図	Model No.	Bearings Parts	Load Cap (kg)		Dimensions (m/m)				Weight (grams)
			Safety	Yielding	W	d	B	D1	
	NP-75	Plain	180	360	32	10	35	56	100
	NP-100	Plain	250	500	35	12	38	76	120
	NP-130	Plain	350	700	42	20	52	104	300
	NP-150	Plain	400	800	45	20	55	123	400
	NP-180	Plain	410	820	45	20	55	151	570
	NP-200	Plain	520	1040	45	20	55	170	1950

NYLON WHEEL

NB型 - Nylon 6 (Ball Bearing) Resistant to Corrosion -40°C ~ 70°C

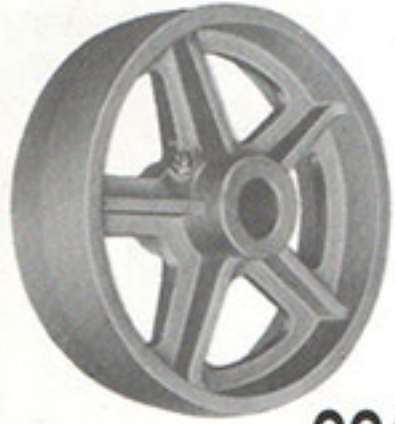


NB

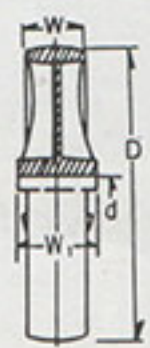
Specifications 寸法図	Model No.	Bearings Parts	Load Cap (kg)		Dimensions (m/m)				Weight (grams)
			Safety	Yielding	W	d	B	D1	
	NB-75	Ball	200	400	32	10	35	56	245
	NB-100	Ball	280	560	35	12	38	76	310
	NB-130	Ball	380	760	42	20	52	104	580
	NB-150	Ball	430	860	45	20	55	123	950
	NB-180	Roller	450	900	45	20	55	151	800
	NB-200	Ball	550	1100	45	20	55	170	910
	NB-250	Ball	660	1320	46	25	62	210	1300

CAST-IRON WHEEL

CCA型 - Cast-Iron (Plain Bearing) -40°C ~ 150°C




CCA

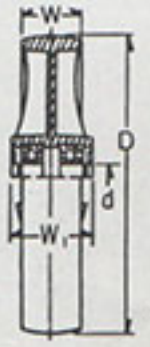
Specifications 寸法図	Model No.	Bearings Parts	Load Cap (kg)		Dimensions (m/m)				Weight (grams)
			Safety	Yielding	W	d	B	D1	
	CCA-75	Plain	120	240	32	10	35	56	435
	CCA-100	Plain	160	320	35	12	38	76	625
	CCA-130	Plain	240	480	42	20	52	104	1320
	CCA-150	Plain	270	540	45	20	55	123	1950
	CCA-180	Plain	300	600	45	20	55	151	2050
	CCA-200	Plain	350	700	50	20	55	170	2925
	CCA-250	Plain	400	800	52	25	62	210	5000
	CCA-300	Plain	480	960	52	25	71	250	7300

CAST-IRON WHEEL

CCB型 - Cast-Iron (Ball Bearing) -40°C ~ 150°C



CCB

Specifications 寸法図	Model No.	Bearings Parts	Load Cap (kg)		Dimensions (m/m)				Weight (grams)
			Safety	Yielding	W	d	B	D1	
	CCB-75	Ball	150	300	32	10	35	56	580
	CCB-100	Ball	200	400	35	12	38	76	815
	CCB-130	Ball	320	640	42	20	52	104	1600
	CCB-150	Ball	400	800	45	20	55	123	2500
	CCB-180	Ball	430	860	45	20	55	151	2950
	CCB-200	Ball	500	1000	50	20	55	170	3610
	CCB-250	Ball	660	1320	52	25	62	210	5300
	CCB-300	Ball	800	1600	52	25	71	250	7600

**WHEELS
& BRACKET**

FOR INDUSTRIAL USE

URETHANE WHEEL



PU

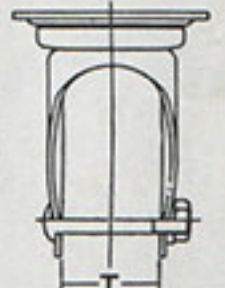
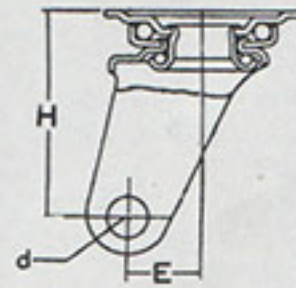
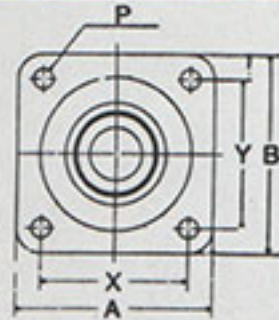
PU型 - Pressed Steel Rim - Urethane Rubber (Ball Bearing) -30° ~ 70°C

Specifications 寸法図	Model No.	Bearings Parts	Load Cap (kg)		Dimensions (m/m)				Weight (grams)
			Safety	Yielding	W	d	B	D1	
	PU- 75	200B	180	360	32	10	35	56	300
	PU-100	201B	250	500	32	12	38	76	450
	PU-130	204B	350	700	35	20	52	104	900
	PU-150	204B	400	800	45	20	55	123	1110
	PU-200	204B	520	1040	45	20	55	170	1950
	PU-250	205B	660	1320	45	25	62	210	3200

J-JB型 - Choice of Wheels: PR • CR • PBR • NR • NP • NB • CCA • CCB • PU

Model No.	Load Cap (kg) Safety Yielding	Height		Dimensions		Bolt P ^{m/m}	Axle Size		Eccen Tricity E ^{m/m}	
		H ₁ ^{m/m}	H ^{m/m}	A × B ^{m/m}	X × Y ^{m/m}		T ^{m/m}	d ^{m/m}		
J- 75	200	400	63	101	85×85	63×63	9.5	40	10	22
J-100	280	560	94	144	94×94	71×71	10.5	43	12	35
J-130	380	760	112	177	107×107	80×80	11.0	53	20	40
J-150	430	860	123	198	119×119	90×90	11.0	56	20	45
J-180	450	900	145	235	140×140	112×112	11.5	56	20	58
J-200	550	1100	150	240	140×140	112×112	11.5	56	20	58
J-250	660	1320	180	305	160×160	125×125	14.0	90	25	71
J-300	800	1600	224	374	175×175	140×140	14.0	100	25	71

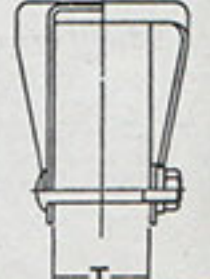
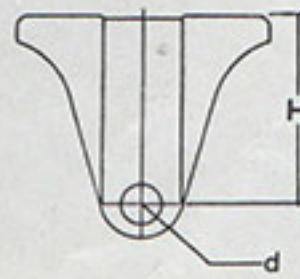
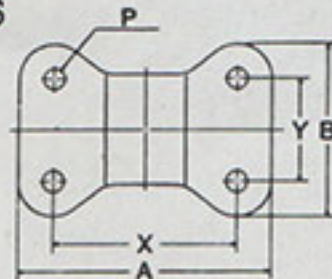
**SPECIFICATIONS
寸法図**



K-KB型 - Choice of Wheels: PR • CR • PBR • NR • NP • NB • CCA • CCB • PU

Model No.	Load Cap (kg) Safety Yielding	Height		Dimensions		Bolt P ^{m/m}	Axle Size		
		H ₁ ^{m/m}	H ^{m/m}	A × B ^{m/m}	X × Y ^{m/m}		T ^{m/m}	d ^{m/m}	
K- 75	200	400	63	101	95×72	60×40	9.5	40	10
K-100	280	560	94	144	116×78	80×45	10.5	43	12
K-130	380	760	112	177	137×93	100×56	11.0	53	20
K-150	430	860	123	198	137×93	100×56	11.0	56	20
K-180	450	900	145	235	151×102	112×63	11.5	56	20
K-200	550	1100	150	240	151×102	112×63	11.5	56	20
K-250	660	1320	180	305	200×140	140×80	14.0	90	25
K-300	800	1600	224	374	220×150	160×90	14.0	100	25

**SPECIFICATIONS
寸法図**



J



JB

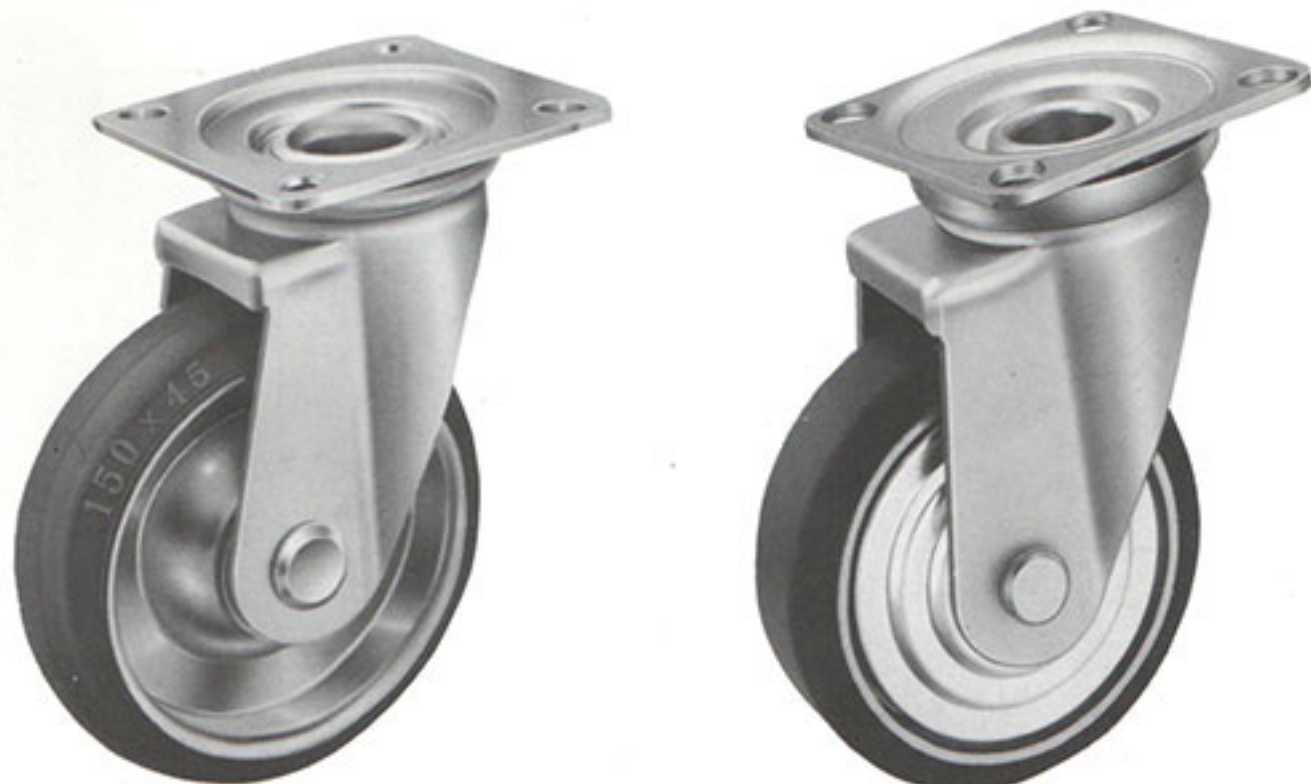
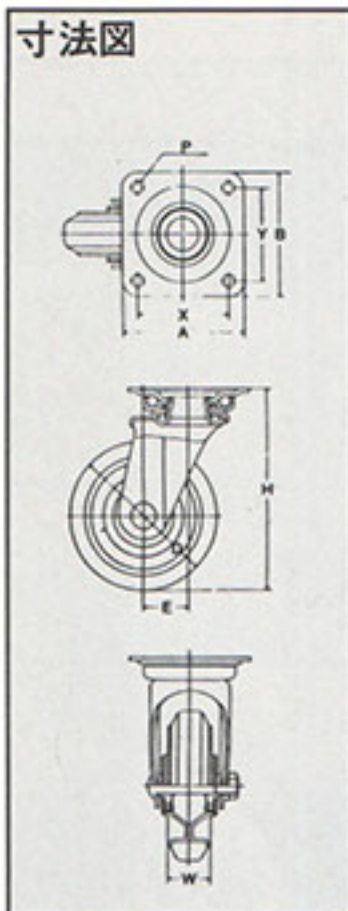


K



KB

J SERIES FOR INDUSTRIAL USE



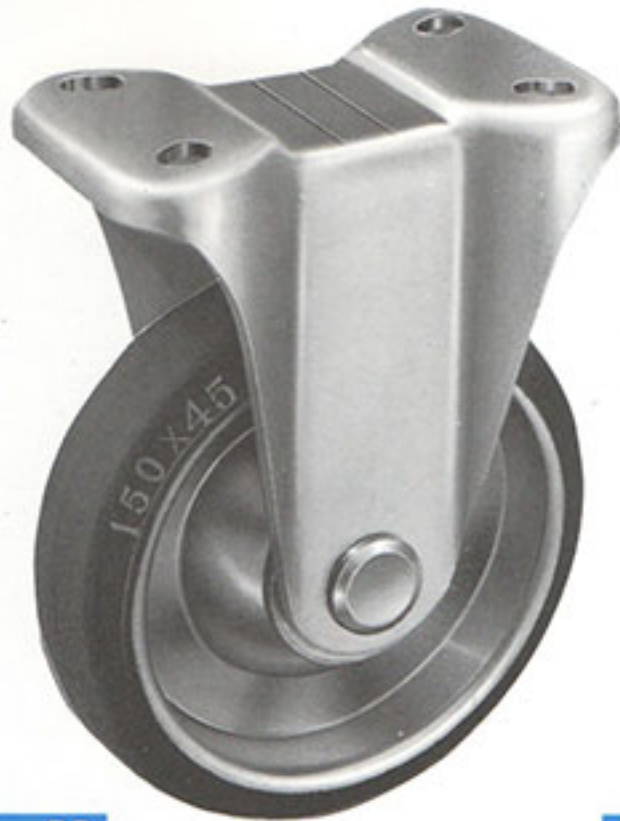
J-PR - Pressed Rubber (-5°C ~ 80°C)
J-CR - Pressed Rubber (120°C)

J-PBR - Pressed Polybutadiene Rubber (Non-Marking)
J-NR - Pressed Rubber (Plain Bearing)
Polycarbonate Nylon-Core-Resistant to Corrosion

Model No.	Choice of Wheels		Bearings	Load Cap (Kg)		Wheel Width	Axle Bore	Height H	Dimensions (m/m)		Bolt P	E	Weight (gram)
				Safety	Yielding				X x Y	A x B			
J-75 (3")	PR	Pressed Rubber	Ball	120	240	32	10	101	63x63	82x82	9.5	22	600
	PBR	Butadiene (Non-marking)	Ball	130	260								600
	CR	Rubber (120°C)	Ball	110	220								600
	NR	Rubber (Nylon-Core)	Plain	90	180								500
J-100 (4")	PR	Pressed Rubber	Ball	160	320	35	12	144	68x68	90x90	11.0	35	1150
	PBR	Butadiene (Non-marking)	Ball	170	340								1150
	CR	Rubber (120°C)	Ball	150	300								1150
	NR	Rubber (Nylon-Core)	Plain	130	260								950
J-130 (5")	PR	Pressed Rubber	Ball	240	480	42	20	177	75x75	102x102	11.0	40	1950
	PBR	Butadiene (Non-marking)	Ball	260	520								1950
	CR	Rubber (120°C)	Ball	230	460								1950
	NR	Rubber (Nylon-Core)	Plain	210	420								1415
J-150 (6")	PR	Pressed Rubber	Ball	270	540	45	20	198	75x75	102x102	11.0	45	2490
	PBR	Butadiene (Non-marking)	Ball	300	600								2490
	CR	Rubber (120°C)	Ball	250	500								2490
	NR	Rubber (Nylon-Core)	Plain	220	440								1880
J-180 (7")	PR	Pressed Rubber	Ball	300	600	45	20	240	105x105	140x140	11.5	58	3650
	PBR	Butadiene (Non-marking)	Ball	330	660								3650
	CR	Rubber (120°C)	Ball	280	560								3650
J-200 (8")	PR	Pressed Rubber	Ball	350	700	45	20	250	105x105	140x140	11.5	58	3730
	PBR	Butadiene (Non-marking)	Ball	380	760								3730
	CR	Rubber (120°C)	Ball	300	600								3730
	NR	Rubber (Nylon-Core)	Ball	280	560								3090
J-250 (10")	PR	Pressed Rubber	Ball	400	800	50	25	305	120x120	160x160	14.0	71	7020
	PBR	Butadiene (Non-marking)	Ball	430	860								7020
	CR	Rubber (120°C)	Ball	380	760								7020
J-300 (12")	PR	Pressed Rubber	Ball	480	960	50	25	374	140x140	175x175	14.0	71	8970
	PBR	Butadiene (Non-marking)	Ball	530	1060								8970
	CR	Rubber (120°C)	Ball	450	900								8970

KSERIES FOR INDUSTRIAL USE

寸法図

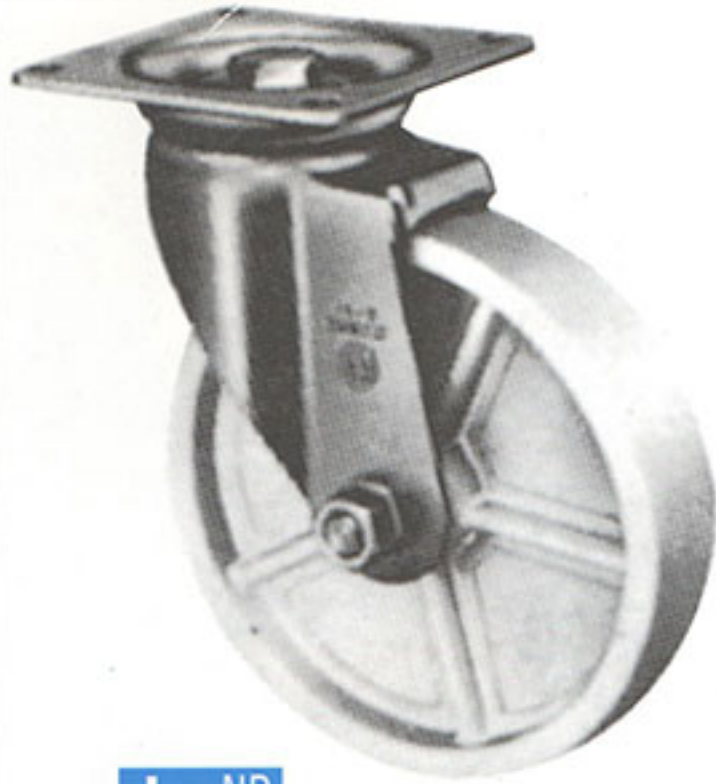
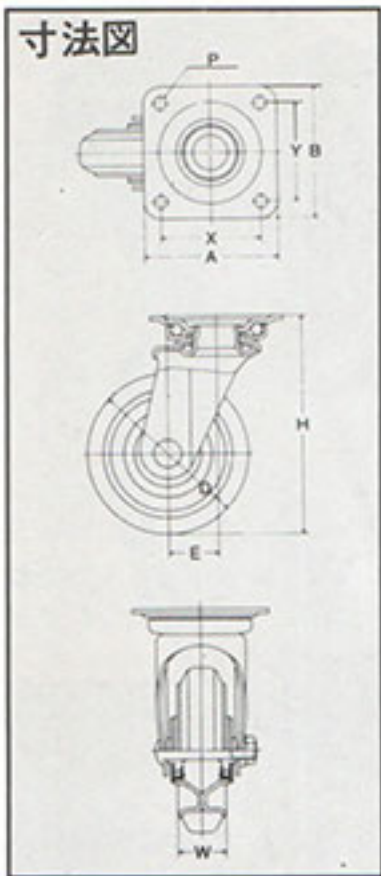


K-PR - Pressed Rubber (-5°C ~ 80°C)
K-CR - Pressed Rubber (120°C)

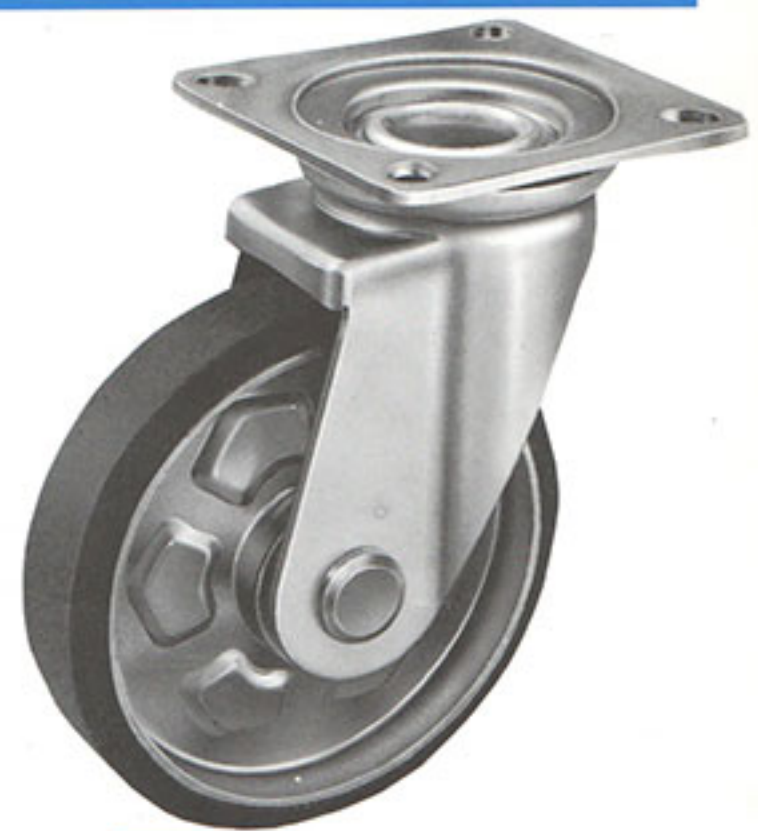
K-PR - Pressed Polybutadiene Rubber (Non-Marking)
K-CR - Pressed Rubber (Plain Bearing)
 Polycarbonate Nylon-Core-Resistant to Corrosion

Model No.	Choice of Wheels		Bearings	Load Cap (Kg)		Wheel Width	Axle Bore	Height H	Dimensions (m/m)		Bolt P	E	Weight (gram)
				Safety	Yielding				X x Y	A x B			
K-75 (3")	PR	Pressed Rubber	Ball	120	240	32	10	101	63x40	95x72	9.5	-	450
	PBR	Butadiene (Non-marking)	Ball	130	260								450
	CR	Rubber (120°C)	Ball	110	220								450
	NR	Rubber (Nylon-Core)	Plain	90	180								390
K-100 (4")	PR	Pressed Rubber	Ball	160	320	35	12	144	78x43	115x80	11.0	-	880
	PBR	Butadiene (Non-marking)	Ball	170	340								880
	CR	Rubber (120°C)	Ball	150	300								880
	NR	Rubber (Nylon-Core)	Plain	130	260								710
K-130 (5")	PR	Pressed Rubber	Ball	240	480	42	20	177	94x52	137x93	11.0	-	1550
	PBR	Butadiene (Non-marking)	Ball	260	520								1550
	CR	Rubber (120°C)	Ball	230	460								1550
	NR	Rubber (Nylon-Core)	Plain	210	420								1025
K-150 (6")	PR	Pressed Rubber	Ball	270	540	45	20	198	96x52	137x93	11.0	-	1890
	PBR	Butadiene (Non-marking)	Ball	300	600								1890
	CR	Rubber (120°C)	Ball	250	500								1890
	NR	Rubber (Nylon-Core)	Plain	220	440								1410
K-180 (7")	PR	Pressed Rubber	Ball	300	600	45	20	240	108x59	151x102	11.5	-	2950
	PBR	Butadiene (Non-marking)	Ball	330	660								2950
	CR	Rubber (120°C)	Ball	280	560								2950
K-200 (8")	PR	Pressed Rubber	Ball	350	700	45	20	250	108x59	151x102	11.5	-	3030
	PBR	Butadiene (Non-marking)	Ball	380	760								3030
	CR	Rubber (120°C)	Ball	300	600								3030
	NR	Rubber (Nylon-Core)	Plain	280	560								2400
K-250 (10")	PR	Pressed Rubber	Ball	400	800	50	25	305	135x75	200x140	14.0	-	6450
	PBR	Butadiene (Non-marking)	Ball	430	860								6450
	CR	Rubber (120°C)	Ball	380	760								6450
K-300 (12")	PR	Pressed Rubber	Ball	480	960	50	25	374	160x90	220x150	14.0	-	8660
	PBR	Butadiene (Non-marking)	Ball	530	1060								8660
	CR	Rubber (120°C)	Ball	450	900								8660

J SERIES FOR INDUSTRIAL USE



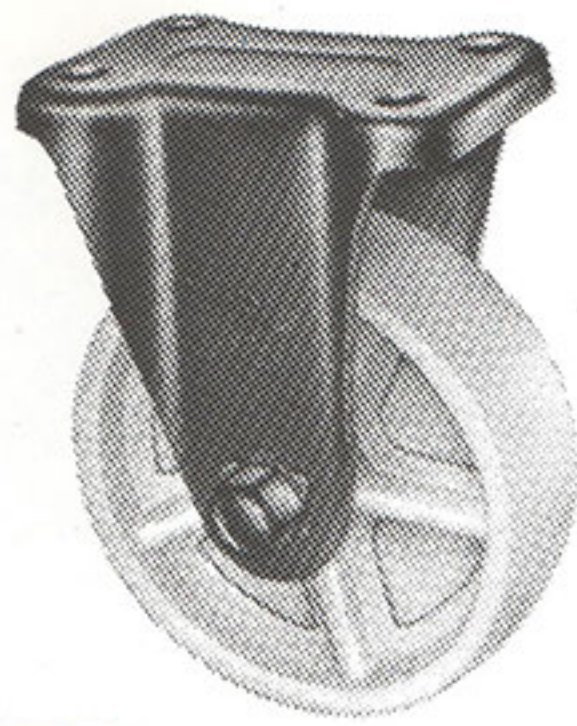
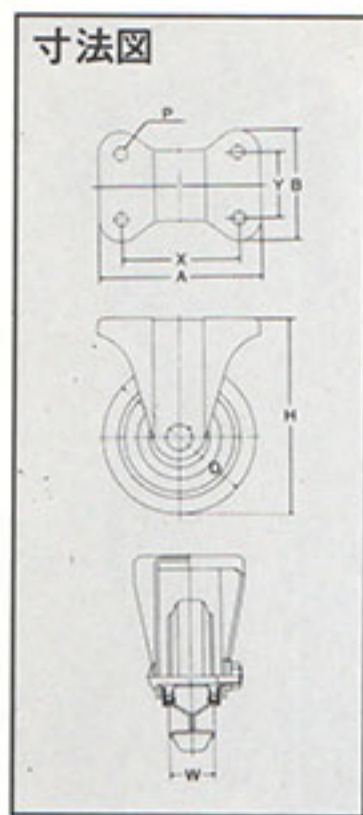
J-NP - Nylon (Plain Bearing)
J-NB - Nylon (Ball & Roller Bearing)



J-PU - Pressed Urethane

Model No.	Choice of Wheels		Bearings	Load Cap (Kg)		Wheel Width	Axle Bore	Height H	Dimensions (m/m)		Bolt P	E	Weight (gram)
	PU	Pressed Urethane		Safety	Yielding				X x Y	A x B			
J-75 (3")	NP	Nylon	Plain	180	360	32	10	101	63x63	82x82	9.5	22	500
	NB	Nylon	Ball	200	400								560
	CCA	Cast Iron	Plain	120	240								805
	CCB	Cast Iron	Ball	150	300								950
	PU	Pressed Urethane	Ball	180	360								700
J-100 (4")	NP	Nylon	Plain	250	500	35	12	144	68x68	90x90	11.0	36	870
	NB	Nylon	Ball	280	560								930
	CCA	Cast Iron	Plain	160	320								1365
	CCB	Cast Iron	Ball	200	400								1555
	PU	Pressed Urethane	Ball	250	500								1200
J-130 (5")	NP	Nylon	Plain	350	700	42	20	177	75x75	102x102	11.0	40	1500
	NB	Nylon	Ball	380	760								1600
	CCA	Cast Iron	Plain	240	480								2490
	CCB	Cast Iron	Ball	320	640								2770
	PU	Pressed Urethane	Ball	350	700								2100
J-150 (6")	NP	Nylon	Plain	400	800	45	20	198	75x75	102x102	11.0	45	1890
	NB	Nylon	Ball	430	860								1990
	CCA	Cast Iron	Plain	270	540								3330
	CCB	Cast Iron	Ball	400	800								3880
	PU	Pressed Urethane	Ball	400	800								2600
J-180 (7")	NP	Nylon	Plain	400	800	45	20	240	112x112	140x140	11.5	58	2700
	NB	Nylon	Roller	430	860								2950
J-200 (8")	NP	Nylon	Plain	520	1040	45	20	250	105x105	140x140	11.5	58	2850
	NB	Nylon	Ball	550	1100								3050
	CCA	Cast Iron	Plain	350	700								5155
	CCB	Cast Iron	Ball	500	1000								5840
	PU	Pressed Urethane	Ball	520	1040								4100
J-250 (10")	NP	Nylon	Ball	660	1320	50	25	305	120x120	160x160	14.0	71	4800
	CCA	Cast Iron	Plain	400	800								8520
	CCB	Cast Iron	Ball	660	1320								8820
	PU	Pressed Urethane	Ball	660	1320								6820
J-300 (12")	CCA	Cast Iron	Plain	480	960	50	25	374	140x140	175x175	14.0	71	11760
	CCB	Cast Iron	Ball	800	1600								11870

K SERIES FOR INDUSTRIAL USE

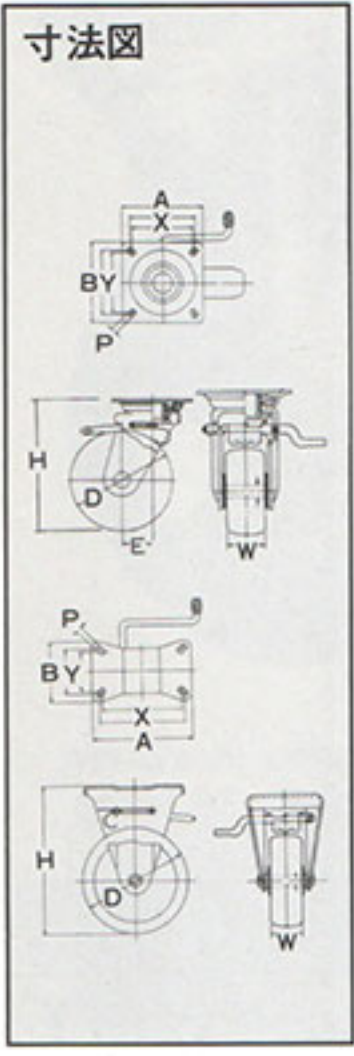


K-NP - Nylon (Plain Bearing)
K-NB - Nylon (Ball & Roller Bearing)

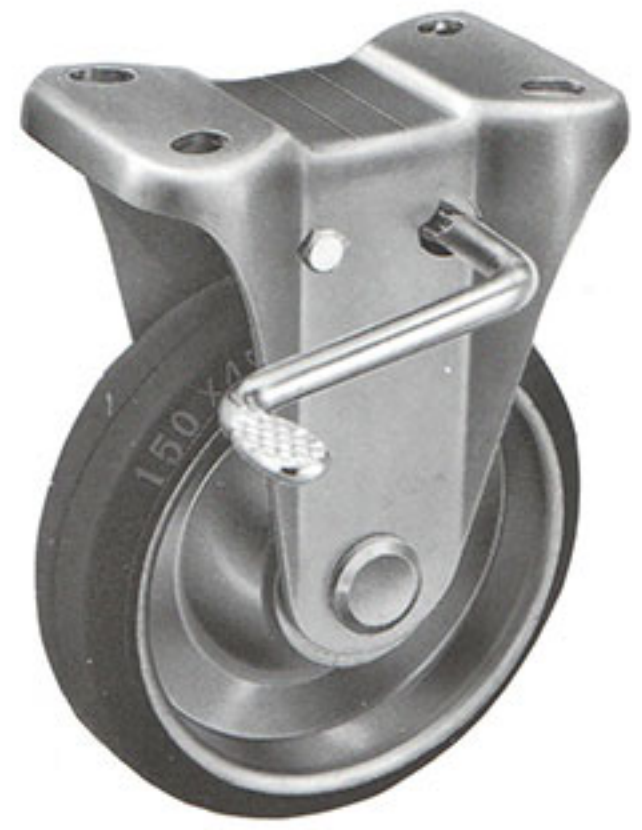
K-CCA - Cast-Iron (Plain Bearing)
K-CCB - Cast-Iron (Ball Bearing)

Model No.	Choice of Wheels		Bearings	Load Cap (Kg)		Wheel Width	Axle Bore	Height H	Dimensions (m/m)		Bolt P	E	Weight (gram)
	PU	Pressed Urethane		Safety	Yielding				X × Y	A × B			
K-75 (3")	NP	Nylon	Ball	180	360	32	10	101	63×40	95×72	9.5	-	350
	NP	Nylon	Plain	180	360								350
	NB	Nylon	Ball	200	400								410
	CCA	Cast Iron	Plain	120	240								695
	CCB	Cast Iron	Ball	150	300								840
K-100 (4")	PU	Pressed Urethane	Ball	250	500	35	12	144	78×43 80×45 82×47	115×80	11.0	-	930
	NP	Nylon	Plain	250	500								600
	NB	Nylon	Ball	280	560								660
	CCA	Cast Iron	Plain	160	320								1125
	CCB	Cast Iron	Ball	200	400								1315
K-130 (5")	PU	Pressed Urethane	Ball	350	700	42	20	177	94×52 100×56 104×58	137×93	11.0	-	1700
	NP	Nylon	Plain	350	700								1100
	NB	Nylon	Ball	380	760								1200
	CCA	Cast Iron	Plain	240	480								1950
	CCB	Cast Iron	Ball	320	640								2230
K-150 (6")	PU	Pressed Urethane	Ball	400	800	45	20	198	96×52 100×56 103×59	137×93	11.0	-	2000
	NP	Nylon	Plain	400	800								1290
	NB	Nylon	Ball	430	860								1390
	CCA	Cast Iron	Plain	270	540								2860
	CCB	Cast Iron	Ball	400	800								3410
K-180 (7")	NP	Nylon	Plain	400	800	45	20	240	112×63	151×102	11.5	-	2000
	NB	Nylon	Roller	430	860								2200
K-200 (8")	PU	Pressed Urethane	Ball	520	1040	45	20	250	108×59 112×63 116×67	151×102	11.5	-	3400
	NP	Nylon	Plain	520	1040								2150
	NB	Nylon	Ball	550	1100								2350
	CCA	Cast Iron	Plain	350	700								4505
	CCB	Cast Iron	Ball	500	1000								5190
K-250 (10")	PU	Pressed Urethane	Ball	660	1320	50	25	305	135×75 140×80 145×85	200×140	14.0	-	6250
	NB	Nylon	Ball	660	1320								4200
	CCA	Cast Iron	Plain	400	800								7950
	CCB	Cast Iron	Ball	660	1320								8250
K-300 (12")	CCA	Cast Iron	Plain	480	960	50	25	374	160×90	220×150	14.0	-	11360
	CCB	Cast Iron	Ball	800	1600								11560

JB KB SERIES BRAKE SYSTEMS



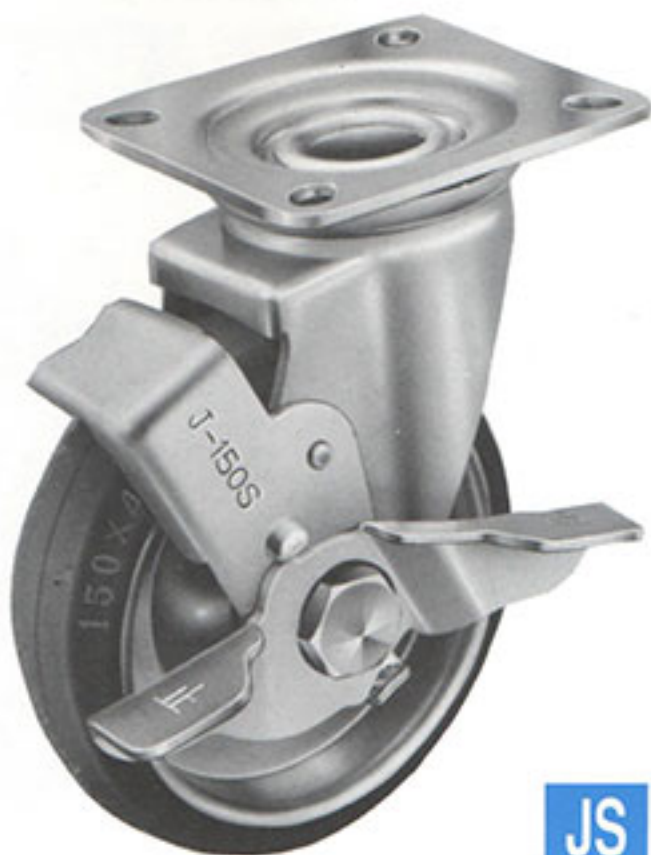
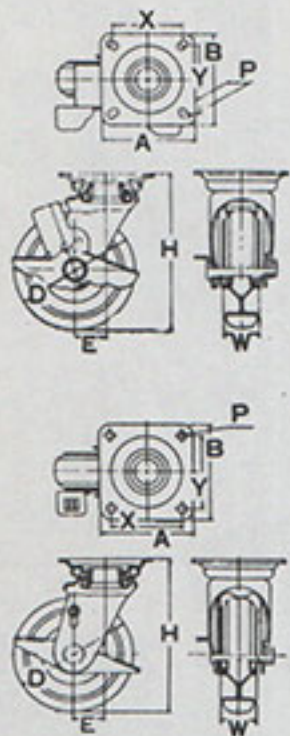
JB - Double Brake
(ダブルストツパー付)



KB (L) Left Rigid Brake
(R) Right Rigid Brake
(ストツパー付)

Model No.	Choice of Wheels		Bearings	Load Cap (Kg)		Wheel Width	Axle Bore	Height H	Dimensions (m/m)		Bolt P	E	Weight (gram)
				Safety	Yielding				X x Y	A x B			
JB-75	PR	Pressed Rubber	Ball	120	240	32	10	101	(JB-75)		9.5	22	-
KB-75	PBR	Butadiene (Non-marking)	Ball	130	260				63x63	82x82			
JS-75	CR	Rubber (120°C)	Ball	110	220				(KB-75)				
JSS-75	NR	Rubber (Nylon-Core)	Plain	90	180				63x40	95x72			
JB-100	PR	Pressed Rubber	Ball	160	320	35	12	144	(JB-100)		11.0	35	-
KB-100	PBR	Butadiene (Non-marking)	Ball	170	340				71x71	95x95			
JS-100	CR	Rubber (120°C)	Ball	150	300				(KB-100)				
JSS-100	NR	Rubber (Nylon-Core)	Plain	130	260				80x45	115x80			
JB-130	PR	Pressed Rubber	Ball	240	480	42	20	177	(JB-130)		11.0	40	-
KB-130	PBR	Butadiene (Non-marking)	Ball	260	520				80x80	108x108			
JS-130	CR	Rubber (120°C)	Ball	230	460				(KB-130)				
JSS-130	NR	Rubber (Nylon-Core)	Plain	210	420				100x56	137x93			
JB-150	PR	Pressed Rubber	Ball	270	540	45	20	198	(JB-150)		11.0	45	-
KB-150	PBR	Butadiene (Non-marking)	Ball	300	600				90x90	120x120			
JS-150	CR	Rubber (120°C)	Ball	250	500				(KB-150)				
JSS-150	NR	Rubber (Nylon-Core)	Plain	220	440				100x56	137x93			
JB-180	PR	Pressed Rubber	Ball	300	600	45	20	240	112x112	140x40	11.5	58	-
KB-180	PBR	Butadiene (Non-marking)	Ball	330	660				112x63	151x102			
	CR	Rubber (120°C)	Ball	280	560								
JB-200	PR	Pressed Rubber	Ball	350	700	45	20	250	(JB-200)		11.5	58	-
KB-200	PBR	Butadiene (Non-marking)	Ball	380	760				125x125	160x160			
JS-200	CR	Rubber (120°C)	Ball	300	600				(KB-200)				
JSS-200	NR	Rubber (Nylon-Core)	Ball	280	560				112x63	151x102			
JB-250	PR	Pressed Rubber	Ball	400	800	50	25	305	140x140	175x175	14.0	71	-
KB-250	PBR	Butadiene (Non-marking)	Ball	430	860				140x80	200x140			
	CR	Rubber (120°C)	Ball	380	760								

寸法図



JS - Single Brake

(ストッパー付)

JSS - Single Brake

(ストッパー付)

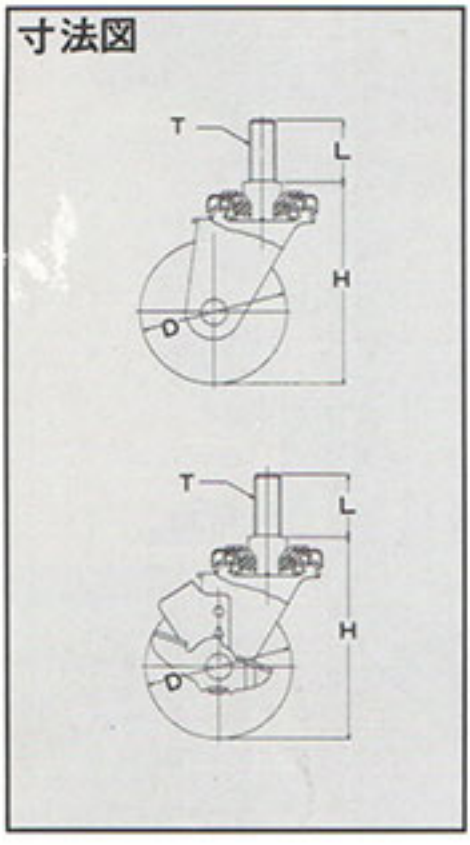
Model No.	Choice of Wheels		Bearings	Load Cap (Kg)		Wheel Width	Axle Bore	Height H	Dimensions (m/m)		Bolt P	E	Weight (gram)
				Safety	Yielding				X x Y	A x B			
JB-75	PU	Pressed Urethane	Ball	180	360	32	10	101	(JB-75)		9.5	22	-
KB-75	NP	Nylon	Plain	180	360				63x63	82x82			
JS-75	NB	Nylon	Ball	200	400				(KB-75)				
CCA	Cast Iron	Plain	120	240	63x40				95x72				
JSS-75	CCB	Cast Iron	Ball	150	300								
JB-100	PU	Pressed Urethane	Ball	250	500	35	12	144	(JB-100)		11.0	35	-
KB-100	NP	Nylon	Plain	250	500				71x71	95x95			
JS-100	NB	Nylon	Ball	280	560				(KB-100)				
CCA	Cast Iron	Plain	160	320	80x45				115x80				
JSS-100	CCB	Cast Iron	Ball	200	400								
JB-130	PU	Pressed Urethane	Ball	350	700	42	20	177	(JB-130)		11.0	40	-
KB-130	NP	Nylon	Plain	350	700				80x80	108x108			
JS-130	NB	Nylon	Ball	380	760				(KB-130)				
CCA	Cast Iron	Plain	240	480	100x56				137x93				
JSS-130	CCB	Cast Iron	Ball	320	640								
JB-150	PU	Pressed Urethane	Ball	400	800	45	20	198	(JB-150)		11.0	45	-
KB-150	NP	Nylon	Plain	400	800				90x90	120x120			
JS-150	NB	Nylon	Ball	430	860				(KB-150)				
CCA	Cast Iron	Plain	270	540	100x56				137x93				
JSS-150	CCB	Cast Iron	Ball	400	800								
JB-180	NP	Nylon	Plain	400	800	45	20	240	112x112	140x140	11.5	58	-
KB-180	NB	Nylon	Roller	430	860				112x63	151x102			
JB-200	PU	Pressed Urethane	Ball	520	1040	45	20	250	(JB-200)		11.5	58	-
KB-200	NP	Nylon	Plain	520	1040				125x125	160x160			
JS-200	NB	Nylon	Ball	550	1100				(KB-200)				
CCA	Cast Iron	Plain	350	700	112x63				151x102				
JSS-200	CCB	Cast Iron	Ball	500	1000								
JB-250	PU	Pressed Urethane	Ball	660	1320	50	25	305	140x140	175x175	14.0	71	-
KB-250	NB	Nylon	Ball	660	1320				(KB-250)				
CCA	Cast Iron	Plain	400	800	140x80				200x140				
CCB	Cast Iron	Ball	660	1320									

S SERIES

FOR INDUSTRIAL & CONSTRUCTION USE

専用スパナ

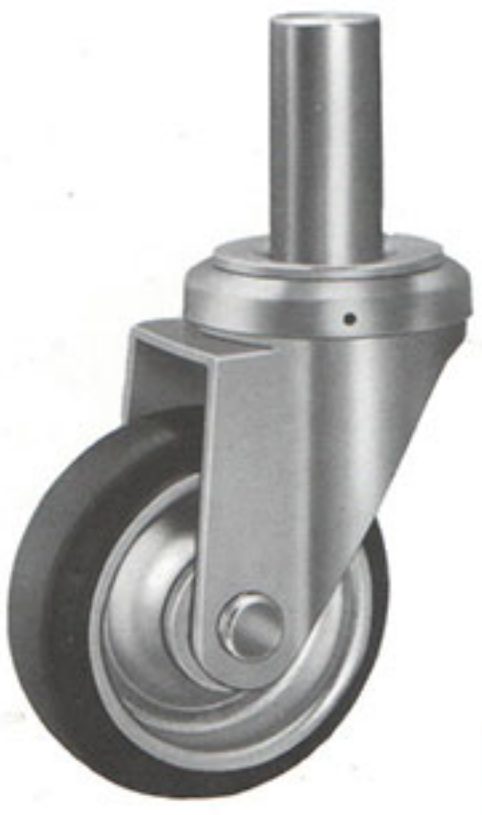
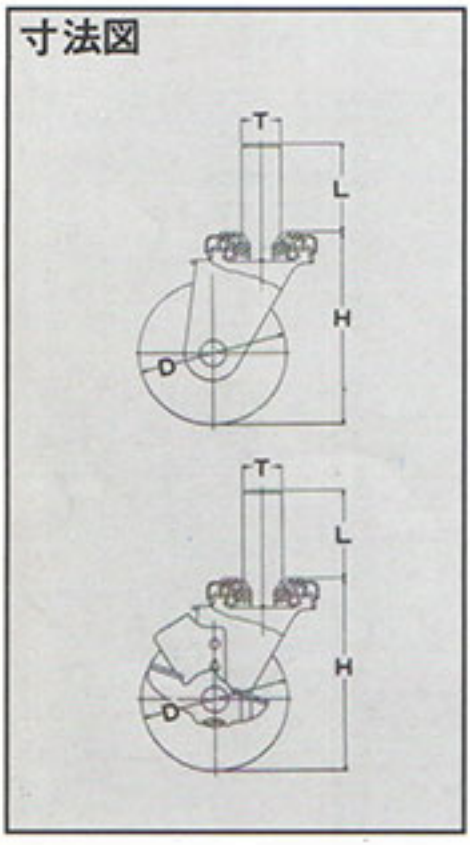
(23 × 29)サイズ65 ~ 150 m/m



ST



STS



SP

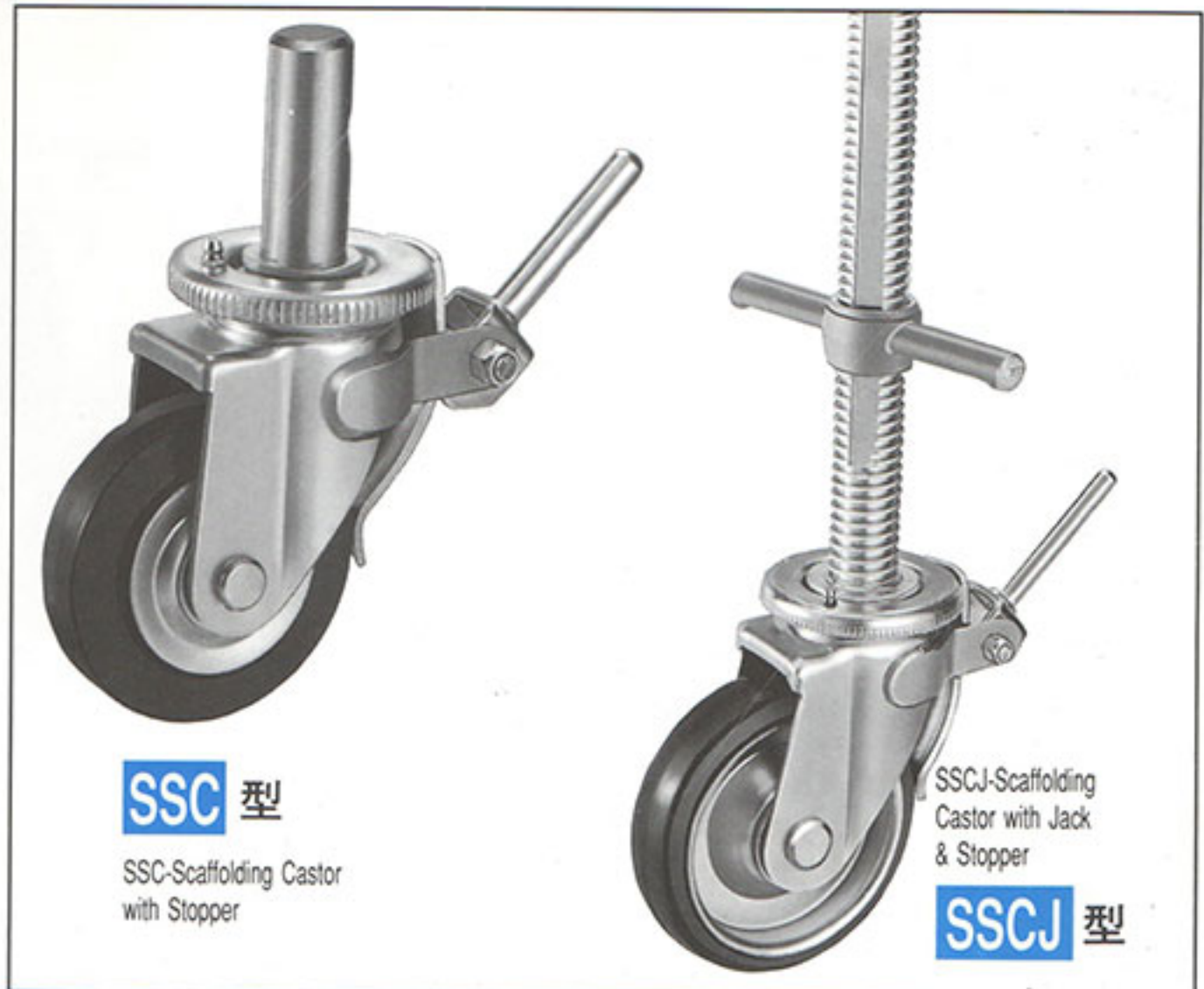
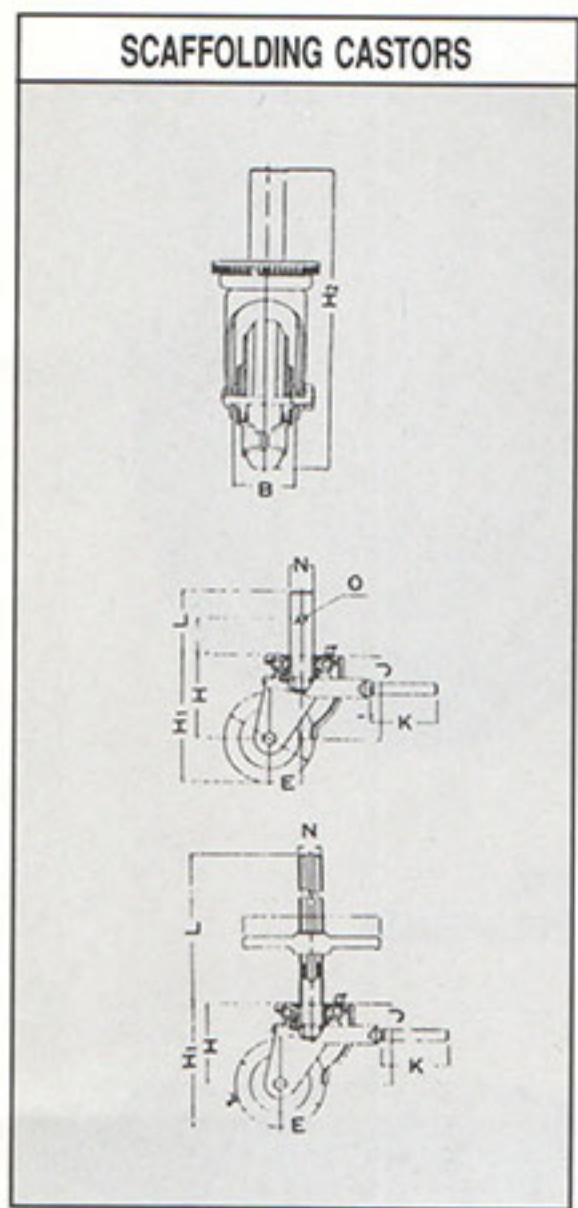


SPS

Model No.	Choice of Wheels		Bearings	Load Cap (Kg)		Size D	Width W	Axle d	Height H	Length L	Stem Ø T	E	Brake Model
				Safety	Yielding								
ST-65	R • HR	Rubber	Plain	50	100	65 (2 1/2")	24	8.5	89	40	M16 × 2.0	29	STS-65
	U	Urethane	Plain	70	140								
SP-65	N	Nylon	Plain	70	140	65 (2 1/2")	24	8.5	85	52	22	29	SPS-65
	C	Cast-Iron	Plain	70	140								
ST-75	R • HR	Rubber	Plain	60	120	75 (3")	24	8.5	97	40	M16 × 2.0	28	STS-75
	U	Urethane	Plain	80	160								
SP-75	N	Nylon	Plain	80	160	75 (3")	24	8.5	93	52	22	28	SPS-75
	C	Cast-Iron	Plain	80	160								
ST-100	PR • PBR	Pressed Rubber	Ball	150	300	100 (4")	32	12	138	40	M20 × 2.5	35	STS-100
	PU	Pressed Urethane	Ball	220	440								
SP-100	NP • NB	Nylon	Plain • Ball	220	440	100 (4")	32	12	132	65	28	35	SPS-100
	CCA • CCB	Cast-Iron	Plain • Ball	220	440								
ST-130	PR • PBR	Pressed Rubber	Ball	220	440	130 (5")	42	20	178	40	M20 × 2.5	40	STS-130
	PU	Pressed Urethane	Ball	300	600								
SP-130	NP • NB	Nylon	Plain • Ball	300	600	130 (5")	42	20	172	65	28	40	SPS-130
	CCA • CCB	Cast-Iron	Plain • Ball	300	600								
ST-150	PR • PBR	Pressed Rubber	Ball	240	480	150 (6")	45	20	196	40	M20 × 2.5	45	STS-150
	PU	Pressed Urethane	Ball	350	700								
SP-150	NP • NB	Nylon	Plain • Ball	350	700	150 (6")	45	20	189	65	28	45	SPS-150
	CCA • CCB	Cast-Iron	Plain • Ball	350	700								

S SERIES

FOR INDUSTRIAL & CONSTRUCTION USE



▶ **SSC 型** ……鋼板製足場用旋回キャスター…………… (労働省規格適合品)

Model No.	Choice of Wheels		Bearings	Load Cap (Kg)	Height		B	J	E	K	H2	N	O	L	M
					H	H1									
SSC-100 (4")	PR • PBR	Pressed Rubber	Ball	160	88	138	43	90	35	90	206	26.6	10	70	40
	PU	Pressed Urethane	Ball	250											
	NP • NB	Nylon	Plain • Ball	250											
	CCA • CCB	Cast-Iron	Plain • Ball	160											
SSC-130 (5")	PR • PBR	Pressed Rubber	Ball	240	107	172	53	115	40	90	271	35	11	100	64
	PU	Pressed Urethane	Ball	350											
	NP • NB	Nylon	Plain • Ball	350											
	CCA • CCB	Cast-Iron	Plain • Ball	240											
SSC-150 (6")	PR • PBR	Pressed Rubber	Ball	270	118	193	56	115	45	90	292	35	11	100	64
	PU	Pressed Urethane	Ball	400											
	NP • NB	Nylon	Plain • Ball	400											
	CCA • CCB	Cast-Iron	Plain • Ball	270											
SSC-200 (8")	PR • PBR	Pressed Rubber	Ball	350	145	245	56	144	58	90	341	35	13	100	66
	PU	Pressed Urethane	Ball	520											
	NP • NB	Nylon	Plain • Ball	520											
	CCA • CCB	Cast-Iron	Plain • Ball	350											

▶ **SSCJ 型** ……鋼板製足場用ジャッキ付旋回キャスター (労働省規格適合品)

Model No.	Choice of Wheels		Bearings	Load Cap (Kg)	Height		B	J	E	K	H2	P	L	N	-
					H	H1									
SSCJ-130 (5")	PR • PBR	Pressed Rubber	Ball	240	107	172	53	115	40	90	528	180	355	35	-
	PU	Pressed Urethane	Ball	350											
	NP • NB	Nylon	Plain • Ball	350											
	CCA • CCB	Cast-Iron	Plain • Ball	240											
SSCJ-150 (6")	PR • PBR	Pressed Rubber	Ball	270	118	193	56	115	45	90	550	180	355	35	-
	PU	Pressed Urethane	Ball	400											
	NP • NB	Nylon	Plain • Ball	400											
	CCA • CCB	Cast-Iron	Plain • Ball	270											
SSCJ-200 (8")	PR • PBR	Pressed Rubber	Ball	350	145	245	56	144	58	90	595	180	355	35	-
	PU	Pressed Urethane	Ball	520											
	NP • NB	Nylon	Plain • Ball	520											
	CCA • CCB	Cast-Iron	Plain • Ball	350											

JX-KX SERIES

TOTALLY STAINLESS STEEL (JIS-SUS-304)



Brake System
(Options)



STAINLESS STEEL
Absolutely Corrosion Free



JXS



JX

ALL STAINLESS STEEL
SWIVEL PLATE CASTER (JIS-SUS-304)



KX

ALL STAINLESS STEEL
RIGID PLATE CASTER (JIS-SUS-304)

■ Ø100, Ø125, and Ø150 casters are greased with cold-resistant grease.

Model No.	Choice of Wheels		Bearings	Load Cap (Kg)		Wheel Width	Axle Bore	Height H	Dimensions (m/m)		Bolt P	E	Brake Model
				Safety	Yielding				X × Y	A × B			
JX-65 (2½")	EM	Solid Rubber	Plain	50	100	25	8	85	55 × 42	70 × 58	8.8	25	JXS-65
	UX	Urethane (nylon-core)	SS-Needle	80	160								
	NX	Nylon	SS-Needle	80	160								
JX-75 (3")	EM	Solid Rubber	Plain	60	120	25	12	93	55 × 42	70 × 58	8.8	25	JXS-75
	UX	Urethane (nylon-core)	SS-Needle	90	180								
	NX	Nylon	SS-Needle	90	180								
JX-100 (4")	SUN	Pressed Rubber	Plain	100	200	32 29	12	130	71 × 71	90 × 90	10.5	40	JXS-100
	UX	Urethane (nylon-core)	SS-Needle	120	240								
	NX	Nylon	SS-Needle	120	240								
JX-125 (5")	SUN	Pressed Rubber	Plain	140	280	38 35	12	165	80 × 80	102 × 102	10.5	35	JXS-125
	RX	Rubber (SS-core)	SS-Needle	140	280								
	UX	Urethane (nylon-core)	SS-Needle	160	320								
	NX	Nylon	SS-Needle	160	320								
JX-150 (6")	SUN	Pressed Rubber	Plain	160	320	42 35	12	190	80 × 80	102 × 102	10.5	40	JXS-150
	RX	Rubber (SS-core)	SS-Needle	160	320								
	UX	Urethane (nylon-core)	SS-Needle	180	360								
	NX	Nylon	SS-Needle	180	360								

Model No.	Choice of Wheels		Bearings	Load Cap (Kg)		Wheel Width	Axle Bore	Height H	Dimensions (m/m)		Bolt P	E	Brake Model
				Safety	Yielding				X × Y	A × B			
KX-65 (2½")	EM	Solid Rubber	Plain	50	100	25	8	85	55 × 28	70 × 47	8.8	—	—
	UX	Urethane (nylon-core)	SS-Needle	80	160								
	NX	Nylon	SS-Needle	80	160								
KX-75 (3")	EM	Solid Rubber	Plain	60	120	25	12	93	55 × 28	70 × 47	8.8	—	—
	UX	Urethane (nylon-core)	SS-Needle	90	180								
	NX	Nylon	SS-Needle	90	180								
KX-100 (4")	SUN	Pressed Rubber	Plain	100	200	32 29	12	130	90 × 50	110 × 70	10.5	—	—
	UX	Urethane (nylon-core)	SS-Needle	120	240								
	NX	Nylon	SS-Needle	120	240								
KX-125 (5")	SUN	Pressed Rubber	Plain	140	280	38 35	12	165	112 × 53	140 × 80	10.5	—	—
	RX	Rubber (SS-core)	SS-Needle	140	280								
	UX	Urethane (nylon-core)	SS-Needle	160	320								
	NX	Nylon	SS-Needle	160	320								
KX-150 (6")	SUN	Pressed Rubber	Plain	160	320	42 35	12	190	112 × 53	140 × 80	10.5	—	—
	RX	Rubber (SS-core)	SS-Needle	160	320								
	UX	Urethane (nylon-core)	SS-Needle	180	360								
	NX	Nylon	SS-Needle	180	360								

JM-KH SERIES HEAVY DUTY INDUSTRIAL

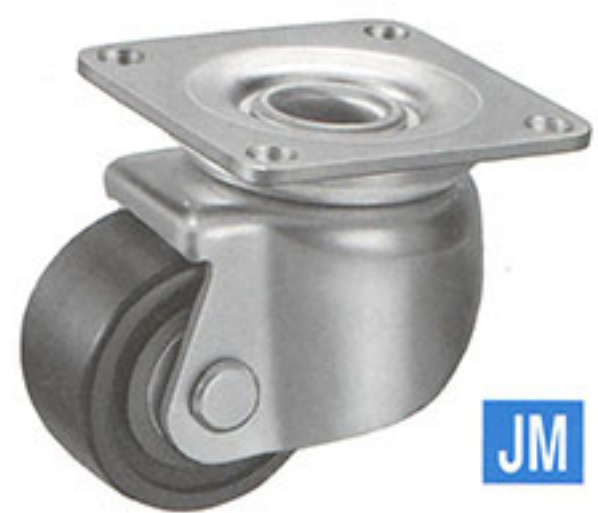
Brake System (Options)



JMS



KH



JM

Wheel Selections



HR - Rubber Wheel



HP - Phenolic Wheel

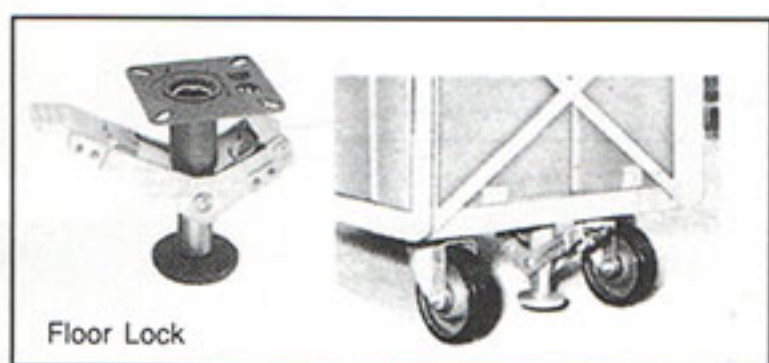


DESIGNED FOR LOW-HEIGHT HEAVY DUTY USE.

■ Fixtures are uni-chrome finished.

Model No.	Choice of Wheels		Bearings	Load Cap (Kg)		Wheel Width	Axle Bore	Height H	Dimensions (m/m)		Bolt P	E	Brake Model
				Safety	Yielding				X × Y	A × B			
JM-50 (2")	HR	Rubber	Plain	120	240	28	8	68	54×36	70×54	6.5	25	JMS-50
	HP	Phenolic	Plain	200	400								
	HU	Urethane	Ball	200	400								
JM-65 (2½")	HR	Rubber	Plain	150	300	38	12	92	71×71	90×90	10.5	32	JMS-65
	HP	Phenolic	Ball	300	600								
	HU	Urethane	Ball	300	600								
JM-75 (3")	HR	Rubber	Plain	200	400	38	12	105	71×71	90×90	10.5	35	JMS-75
	HP	Phenolic	Ball	350	700								
	HU	Urethane	Ball	350	700								
KH-50 (2")	HR	Rubber	Plain	120	240	28	8	68	66×36	80×50	6.5	-	-
	HP	Phenolic	Plain	200	400								
	HU	Urethane	Ball	200	400								
KH-65 (2½")	HR	Rubber	Plain	150	300	38	12	92	91×47	124×80	10.5	-	-
	HP	Phenolic	Ball	300	600								
	HU	Urethane	Ball	300	600								
KH-75 (3")	HR	Rubber	Plain	200	400	38	12	105	103×52	136×85	10.5	-	-
	HP	Phenolic	Ball	350	700								
	HU	Urethane	Ball	350	700								

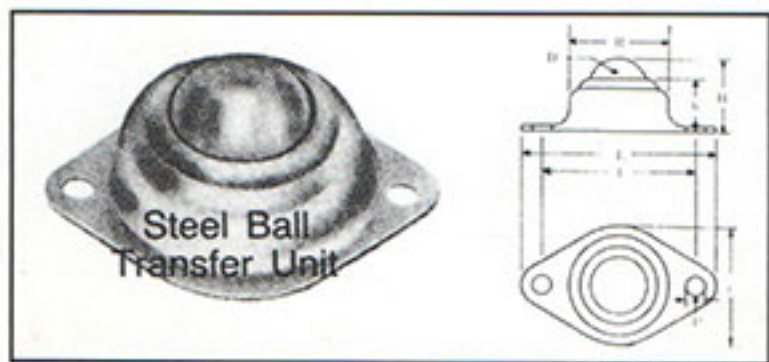
MATERIAL HANDLING HEAVY DUTY INDUSTRIAL



Floor Lock

Floor Lock — Parking Brake Perfectly Functions on uneven surface

Model No.	Down Extended Height	Up Retracted Height	Stroke	Mounting Hole Pitch	Pedal Length	Clearance From Mounting Surface	Load Cap. (kg)	Weight (gram)
FL-100	145	120	25	85×85 100×100	140	5	200	1800
FL-150	205	165	40	85×85 100×100	145	15	300	2000



Steel Ball Transfer Unit

Ball Transfer Unit — For Conveyors, Turn Tables & Multi Purposes

Model No.	Size of Ball (mm) A	Total Height	R	P	L	I	Load Cap.
5-18	18 (11/16")	21 mm	30 mm	5 mm	58 mm	46 mm	30 kg
5-25	25 (1")	31 mm	43 mm	5 mm	69 mm	56 mm	40 kg
5-32	32 (1¼")	37 mm	48 mm	6 mm	82 mm	66 mm	50 kg

T SERIES

FOR INDUSTRIAL USE

産業車両用キヤスター

TLJ



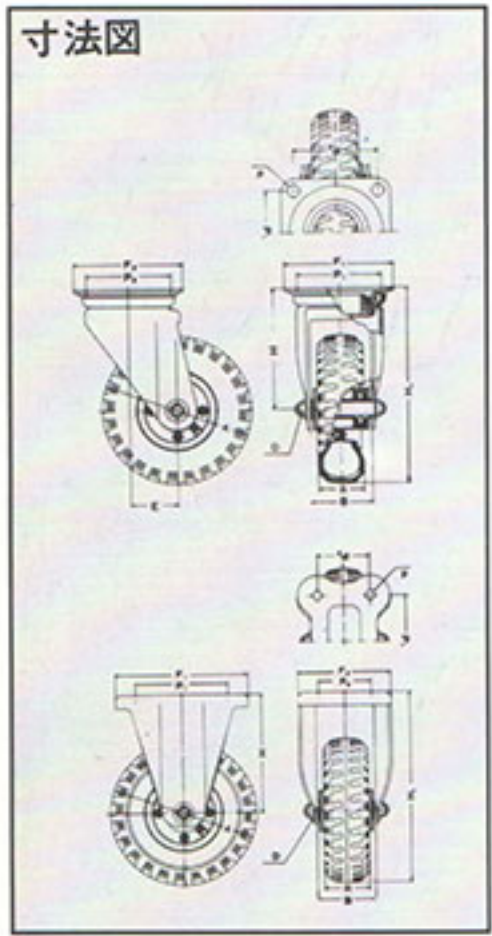
TL



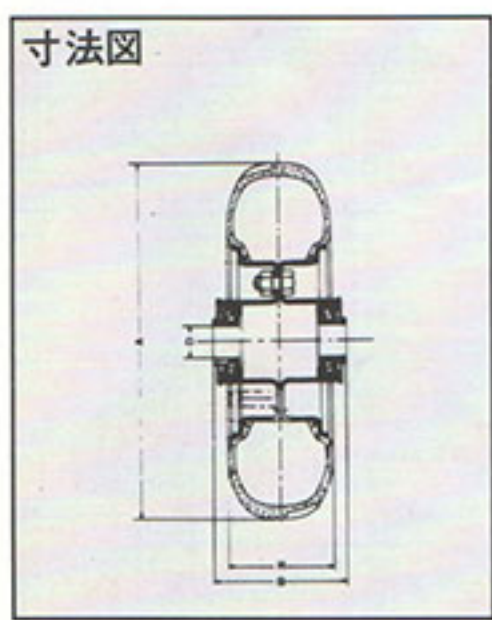
TLK



寸法図



寸法図



▶ TLJ J型…鋼板製産業車輛用旋回テーブル支持金具

Model No.	Type	Bearings	Load (Kg)	Height H	Dimensions (m/m)		P	B	D	E
					F1 × F2	P1 × P2				
TLJ-2-50 ET	Pneumatic	Ball	100	292	140×140	112×112	14	90	20	58
TLJ-2-50-4	Pneumatic	Ball	150	292	160×160	125×125	14	90	20	71
TLJ-3-00-4	Pneumatic	Ball		308						
TLJ-3-50-4	Pneumatic	Ball	200	369	175×175	140×140	14	110	25	71

▶ TLK型 TL型…産業車輛用空気入車輪
K型…鋼板製産業車輛用固定支持金具

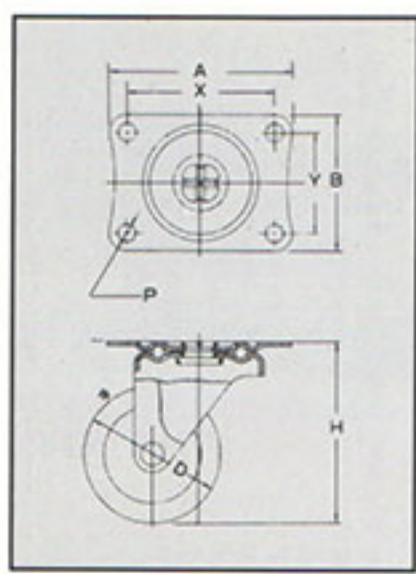
Model No.	Type	Bearings	Load (Kg)	Height H	Dimensions (m/m)		P	B	D
					F1 × F2	P1 × P2			
TLK-2-50 ET	Pneumatic	Ball	100	292	158×120	112×63	14	90	20
TLK-2-50-4	Pneumatic	Ball	150	292	200×140	140×80	14	90	20
TLK-3-00-4	Pneumatic	Ball		308					
TLK-3-50-4	Pneumatic	Ball	200	369	220×150	160×80	14	110	25

▶ TL型 L型…産業車輛用空気入車輪

Model No.	Size A	Width R	Bearings	Load (Kg)	Boss B	Bore D	Pressure kg/cm ²	Speed Limit kg
TL-2-50-4	225	68	204B	100	82	20	8km/h 3.5	8km/h 85
TL-3-00-4	256	82	204B	150	82	20	8km/h 3.5	8km/h 110
TL-3-50-4	290	95	204B	200	98	25	8km/h 3.5	8km/h 160

TE/KD SERIES

FOR GENERAL USE



KD



TE

■ Fixtures on $\varnothing 25 \sim \varnothing 50$ casters uni-chrome
 $\varnothing 65$ and $\varnothing 75$ casters chrome finished

Model No.	Choice of Wheels			Bearings	Load Cap (Kg)		Wheel Width	Axle Bore	Height H	Dimensions (m/m)		E	Brake Model
					Safety	Yielding				A x B	X x Y		
TE-25 (1")	RM	Rubber	Black	Plain	11	22	12	4	33	40x32	32x24	10	—
	NM	Nylon (White)	Non-marking	Plain	14	28							
	FM	Cast Iron	Hard	Plain	16	32							
TE-32 (1 1/4")	RM	Rubber	Black	Plain	18	36	16	4.5	43	45x32	36x23	12	—
	NM	Nylon (White)	Non-marking	Plain	23	46							
	FM	Cast Iron	Hard	Plain	26	52							
TE-40 (1 1/2")	RM	Rubber	Black	Plain	32	64	18	6	56	55x38	44x27	18	S-1
	NM	Nylon (White)	Non-marking	Plain	32	64							
	NTP	Vinyl	Non-marking	Plain	32	64							
	FM	Cast Iron	Hard	Plain	37	74							
TE-50 (2")	RM	Rubber	Black	Plain	40	80	20	6	65	55x38	44x27	20	S-1
	NM	Nylon (White)	Non-marking	Plain	40	80							
	NTP	Vinyl	Non-marking	Plain	40	80							
	FM	Cast Iron	Hard	Plain	45	90							
TE-65 (2 1/2")	RM	Rubber	Black	Plain	55	110	22	8	83	70x60	55x42	25	S-2
	NM	Nylon (White)	Non-marking	Plain	65	130	25						
	FM	Cast Iron	Hard	Plain	75	150	30						
TE-75 (3")	RM	Rubber	Black	Plain	60	120	22	8	95	70x60	55x42	30	S-2
	NM	Nylon (White)	Non-marking	Plain	70	140	25						

Model No.	Choice of Wheels			Bearings	Load Cap (Kg)		Wheel Width	Axle Bore	Height H	Dimensions (m/m)		Bolt P
					Safety	Yielding				A x B	X x Y	
KD-25 (1")	RM	Rubber	Black	Plain	11	22	12	4	33	40x32	32x24	4
	NM	Nylon (White)	Non-marking	Plain	14	28						
	FM	Cast Iron	Hard	Plain	16	32						
KD-32 (1 1/4")	RM	Rubber	Black	Plain	18	36	16	4.5	43	45x32	36x23	4.5
	NM	Nylon (White)	Non-marking	Plain	23	46						
	FM	Cast Iron	Hard	Plain	26	52						
KD-40 (1 1/2")	RM	Rubber	Black	Plain	32	64	18	6	56	55x38	44x27	5
	NM	Nylon (White)	Non-marking	Plain	32	64						
	NTP	Vinyl	Non-marking	Plain	32	64						
	FM	Cast Iron	Hard	Plain	37	74						
KD-50 (2")	RM	Rubber	Black	Plain	40	80	20	6	65	55x38	44x27	5
	NM	Nylon (White)	Non-marking	Plain	40	80						
	NTP	Vinyl	Non-marking	Plain	40	80						
	FM	Cast Iron	Hard	Plain	45	90						
KD-65 (2 1/2")	RM	Rubber	Black	Plain	55	110	22	8	83	70x60	55x42	8
	NM	Nylon (White)	Non-marking	Plain	65	130	25					
	FM	Cast Iron	Hard	Plain	75	150	20					
KD-75 (3")	RM	Rubber	Black	Plain	60	120	22	8	95	70x60	55x42	8
	NM	Nylon (White)	Non-marking	Plain	70	140	25					

Brake System (Options)

Wheel Selections



S-1



S-2



RM All rubber (SBR)



NM Nylon



FM Cast iron



NTP PVC (Vinyl) polypropylene center

L-TYPE ■ 最大積載量 /300kg

M-TYPE ■ 最大積載量 /150kg

—ハンドル—
可倒式型



●ブルー

L-201
M-101



●グリーン

L-201
M-101



●レッド

L-201
M-101



●ブラック

L-201
M-101

可倒式だから、
折りたたんで手軽に収納。



＜寸法仕様、材質＞

- ・寸法/814 x 513 x 289 (902) mm
- ・重量/15.1kg L-TYPE

＜寸法仕様、材質＞

- ・寸法/725 x 475 x 250 (860) mm
- * () 内はハンドル起立時の寸法
- ・重量/9.3kg M-TYPE

S-TYPE ■ 最大積載量 /100kg



●ブルー

S-001



●グリーン

S-001



●レッド

S-001



●ブラック

S-001

＜寸法仕様、材質＞

- ・寸法/ 604 x 388 x 250 (785) mm
- * () 内はハンドル起立時の寸法
- ・材質/ ハンドル: スチール (クロームメッキ)
- 本 体: ポリプロピレン系複合材
- キャスター: タイヤ・コム/ ホイール・6ナイロン
- 重量7.4kg

Wheel-Barrow HANDTRUCK

FOR INDUSTRIAL USE

3 Directions (180°)
Small Type



FOLDABLE PLUS PORTABLE



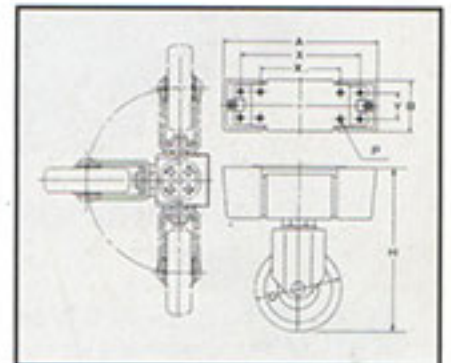
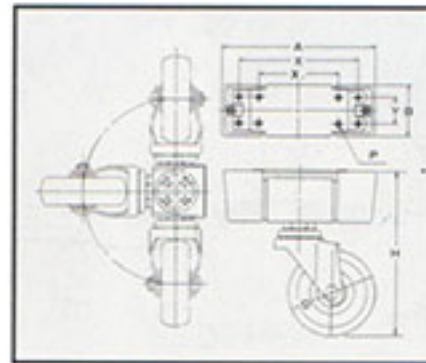
LASTEST INVENTION!

2 DIRECTIONS (90°)



All Directions (360°)

Model No.	Choice of Wheels		D	Load (Kg)	Height H	Dimension (m/m)		P	Degrees
	A × B	X × Y							
CSMU-9-50	R	Rubber	50mm (2")	40	108	115 × 39	90(60) × 20	3	90°
	N	Nylon		50					
	HR	Rubber		40					
CSMJ-9-65	R	Rubber	65mm (2 1/2")	45	125	115 × 39	90(60) × 20	3	90°
	TR	Rubber		50					
	N	Nylon		55					
	HR	Rubber		45					
CSMU-18-75	R	Rubber	75mm (3")	50	135	115 × 39	90(60) × 20	3	180°
	TR	Rubber		60					
	N	Nylon		65					
	HR	Rubber		50					
CSMU-18-100	R	Rubber	100mm (4")	60	166	115 × 39	90(60) × 20	3	180°
	TR	Rubber		65					
	N	Nylon		70					
	HR	Rubber		60					



(OKB) US-103
58l:3cu.ft.



(OKB) US-102
47l:2 1/2cu.ft.



(OKB) US-500
65l:4cu.ft.



13'×3' Pneumatic

13'×3' Solid



Center Bore - 15 mm Double Ball Bearing

Wheel-Barrows — For Construction Use

Type (Model)	Plate Thickness	Overall Length	Capacity in Sand Heap	Liquid	Pneumatic Type Weight	Solid Type Weight	Wheel Ø
US-103	0.8 mm	1280 mm	3 cu. ft.	58 l	15 kg	17 kg	13×3"
US-500	1.0 mm	1360 mm	4 cu. ft.	65 l	15 kg	17 kg	13×3"
US-102	1.0 mm	1350 mm	2 1/2 cu. ft.	47 l	15 kg	17 kg	13×3"

**PRESTAR
HANDTRUCK**

FOR INDUSTRIAL USE

NB ニューヒューテーカー
SERIES

150kg 330Lb.



NB-101 (折たたみ式) FOLDING TYPE



NB-104 (2段式)



NB-105 (3段式)



NB-127 (2段式ネット付)

TR イライアルカー
SERIES

150kg 330Lb.



TR-101 (折たたみ式) FOLDING TYPE



NB-106 (スライド式)



NB-107 (サイドネット式)

NF ニューフレツンユカー
SERIES

300kg 660Lb.



NF-301 (折たたみ式) FOLDING TYPE



NF-304 (2段式)



NF-305 (3段式)



NF-303 (両袖式)



NF-306 (スライド式)



NF-307 (サイドネット式)

**PRESTAR
HANDTRUCK**

FOR INDUSTRIAL USE

ニューグランドカー
NG SERIES

500kg
8" CASTER
400kg
6" CASTER



NG-401 (折たたみ式) FOLDING TYPE



NG-402 (固定式) FIXED TYPE



NG-403 (両袖式)

グランドカー
PG SERIES

600kg
8" CASTER



PG-502 (固定式) FIXED TYPE



PG-503 (両袖式)



NG-407 (サイドネット式)

400kg 800Lb.
5" CASTER



TF-402 (固定式) FIXED TYPE



TF-403 (両袖式)



NB-S101 / NG-S402



NF-H301 / NG-H402

ブラフレッシュカー
PB/PF SERIES

120kg 264Lb.
4" & 5" CASTER



PB-100B (ハンドルなし)
PF-300B (ハンドルなし)



PB-101B (折たたみ式) FOLDING TYPE
PB-301B (折たたみ式) FOLDING TYPE



PB-104B (2段式両袖)
PB-114B



PB-105B (3段式両袖)
PF-305B

●仕様 (Specification)

		積載面 LOADING FACE	床面高さ FLOOR HEIGHT	HANDLE HEIGHT	自重 NET WEIGHT	積載荷重 LOADING CAPACITY	CASTER	始動時抵抗 STARTING RESISTANCE
NB SERIES	NB-101	740×480 ^{mm} (29"×19")	140 ^{mm} (5 ¹ / ₂ "	830 ^{mm} (32 ³ / ₄ "	12.5kg (27.5Lb.)	150kg (330Lb.)	100 ^{mm} (4")	2.6kg (5.7Lb.)
	NB-102			840 ^{mm} (33")	11.5kg (25.3Lb.)			
	NB-104			850 ^{mm} (33 ¹ / ₂ "	20kg (44Lb.)			
	NB-114							
	NB-127			990 ^{mm} (39")	26.6kg (58.6Lb.)			
	NB-105			850 ^{mm} (33 ¹ / ₂ "	27kg (59.4Lb.)			
	NB-115				26kg (57.2Lb.)			
	NB-106				18kg (39.6Lb.)			
	NB-107				19.7kg (43.4Lb.)			
NF SERIES	NF-301	920×610 ^{mm} (36 ¹ / ₄ "×24")	210 ^{mm} (8 ¹ / ₂ "	870 ^{mm} (34 ¹ / ₄ "	22.5kg (49.5Lb.)	300kg (660Lb.)	130 ^{mm} (5")	3.1kg (6.8Lb.)
	NF-302			880 ^{mm} (34 ¹ / ₂ "	21kg (46.2Lb.)			
	NF-303				24.5kg (53.9Lb.)			
	NF-304			930 ^{mm} (36 ¹ / ₂ "	34kg (74.8Lb.)			
	NF-314			1050 ^{mm} (41 ¹ / ₃ "	33kg (72.6Lb.)			
	NF-327				42kg (92.4Lb.)			
	NF-305				45kg (99Lb.)			
	NF-315			930 ^{mm} (36 ¹ / ₂ "	44kg (96.8Lb.)			
	NF-306			920 ^{mm} (36 ¹ / ₄ "	30kg (66Lb.)			
	NF-307				32.5kg (71.5Lb.)			
FL SERIES	FL-361	1210×610 ^{mm} (47 ³ / ₄ "×24")	210 ^{mm} (8 ¹ / ₄ "	870 ^{mm} (34 ¹ / ₂ "	26.5kg (58.3Lb.)	300kg (660Lb.)	130 ^{mm} (5")	3.1kg (6.8Lb.)
	FL-362			880 ^{mm} (34 ¹ / ₂ "	27.5kg (60.5Lb.)			
	FL-363				30.5kg (67.1Lb.)			
NG SERIES	NG-401-8	1240×790 ^{mm} (49"×31")	290 ^{mm} (11 ¹ / ₂ "	855 ^{mm} (34 ¹ / ₄ "	44kg (96.8Lb.)	500kg (1100Lb.)	200 ^{mm} (8")	5.7kg (12.5Lb.)
	NG-402-8			880 ^{mm} (34 ¹ / ₂ "	43kg (94.6Lb.)			
	NG-403-8				49kg (107.8Lb.)			
	NG-407-8			980 ^{mm} (38 ¹ / ₂ "	62kg (136.4Lb.)			
	NG-401-6	235 ^{mm} (9 ¹ / ₂ "	800 ^{mm} (31 ¹ / ₂ "	39kg (85.8Lb.)	400kg (880Lb.)	150 ^{mm} (6")	3.8kg (8.4Lb.)	
	NG-402-6		825 ^{mm} (36 ¹ / ₂ "	38kg (83.6Lb.)				
	NG-403-6			44kg (96.8Lb.)				
	NG-407-6		925 ^{mm} (36 ¹ / ₂ "	57kg (125.4Lb.)				
TR SERIES	TR-101	715×460 ^{mm} (28"×18")	135 ^{mm} (5 ¹ / ₃ "	825 ^{mm} (32 ¹ / ₂ "	11.7kg (25.8Lb.)	150kg (330Lb.)	100 ^{mm} (4")	2.6kg (5.7Lb.)
	TR-102			835 ^{mm} (33")	10.7kg (23.6Lb.)			
TF SERIES	TF-402	900×600 ^{mm} (35 ¹ / ₂ "×23 ¹ / ₂ "	220 ^{mm} (8 ³ / ₄ "	860 ^{mm} (34")	24kg (52.8Lb.)	400kg (880Lb.)	130 ^{mm} (5")	3.1kg (6.8Lb.)
	TF-403				28kg (61.6Lb.)			
PG SERIES	PG-502	1230×780 ^{mm} (48 ¹ / ₂ "×30 ³ / ₄ "	320 ^{mm} (12 ¹ / ₂ "	865 ^{mm} (34")	45kg (99Lb.)	600kg (1320Lb.)	200 ^{mm} (8")	6.6kg (5.7Lb.)
	PG-503				51kg (112.2Lb.)			
PB SERIES	PB-101	710×455 ^{mm} (28"×18")	145 ^{mm} (5 ² / ₃ "	835 ^{mm} (33")	9kg (19.8Lb.)	120kg (264Lb.)	100 ^{mm} (4")	2.6kg (5.7Lb.)
	PB-102			845 ^{mm} (33 ¹ / ₄ "	8.5kg (18.7Lb.)			
	PB-104			855 ^{mm} (33 ¹ / ₂ "	13.8kg (30.4Lb.)			
	PB-114				12.8kg (28.2Lb.)			
	PB-105				18kg (39.6Lb.)			
	PB-115			17kg (37.4Lb.)				
	PB-100			—	5.4kg (11.9Lb.)			
PF SERIES	PF-301	895×595 ^{mm} (35 ¹ / ₄ "×23 ¹ / ₂ "	215 ^{mm} (8 ¹ / ₂ "	870 ^{mm} (34 ¹ / ₄ "	17kg (37.4Lb.)	300kg (660Lb.)	130 ^{mm} (5")	3.7kg (8.1Lb.)
	PF-302			880 ^{mm} (34 ¹ / ₂ "	15.8kg (34.8Lb.)			
	PF-304			930 ^{mm} (36 ¹ / ₂ "	25.2kg (55.5Lb.)			
	PF-314				24kg (52.8Lb.)			
	PF-305				32.5kg (71.5Lb.)			
	PF-315			31.5kg (69.3Lb.)				
	PF-300			—	12.6kg (27.8Lb.)			

★仕様は予告なく変更する場合があります。あらかじめご了承ください。

*Specifications are subject to change without notice.

HANDTRUCK CASTER FOR INDUSTRIAL USE

• S-TYPE, M-TYPE



BLACK TFJ-PBR



BLUE GREEN RED

• ストツペー付キヤスター



BLACK. BLUE. GREEN. RED
4色揃ってあります。(S-M-TYPE有)



TFJ-SPR



BLUE GREEN RED



TFJ-R



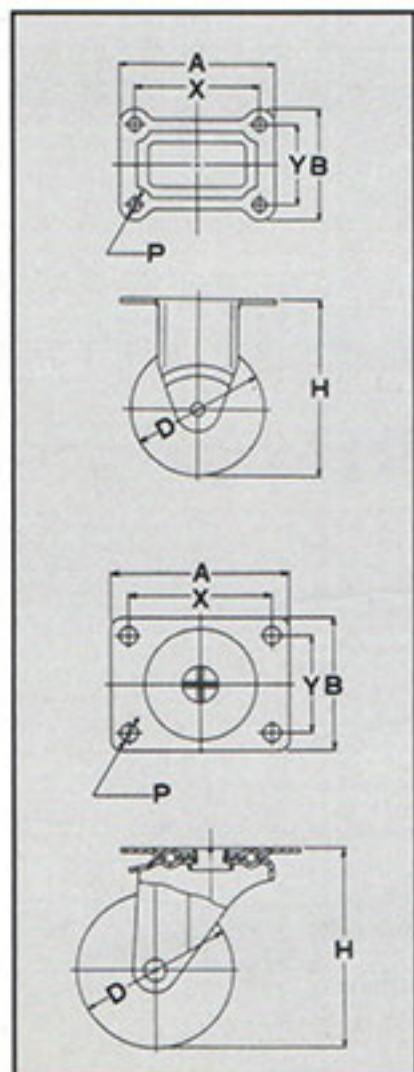
TFK-N



TR-101
• TFJ-100R
(4 inch)



NF-301
• TFJ-130
(5 inch)



Model No.	Choice of Wheels		Bearings	Load (Kg)	Height H	Dimension (m/m)		P	E
						A × B	X × Y		
TFJ-75	R	Rubber	Plain	60	93	81×61 95×74	63×40 75×45	9	29
	HR	Rubber		70					
	N	Nylon		80					
	U	Urethane		80					
TFJ-100	SPR	Rubber	Ball	160	125	100×58 81×61	82×40 63×40	9	35
	PBR	Rubber		170					
	NB	Nylon		250					
	PU	Urethane		250					
TFJ-130	SPR	Rubber	Ball	240	172	124×89	100×56	11	40
	PBR	Rubber		260					
	NB	Nylon		350					
	PU	Urethane		380					

Model No.	Choice of Wheels		Bearings	Load (Kg)	Height H	Dimension (m/m)		P	E
						A × B	X × Y		
TFK-75	R	Rubber	Plain	60	93	81×61	63×40	9	-
	HR	Rubber		70					
	N	Nylon		80					
	U	Urethane		80					
TFK-100	SPR	Rubber	Ball	160	125	100×58 81×61	82×40 63×40	9	-
	PBR	Rubber		170					
	NB	Nylon		250					
	PU	Urethane		250					
TFK-130	SPR	Rubber	Ball	240	172	124×89	100×56	11	-
	PBR	Rubber		260					
	NB	Nylon		350					
	PU	Urethane		380					

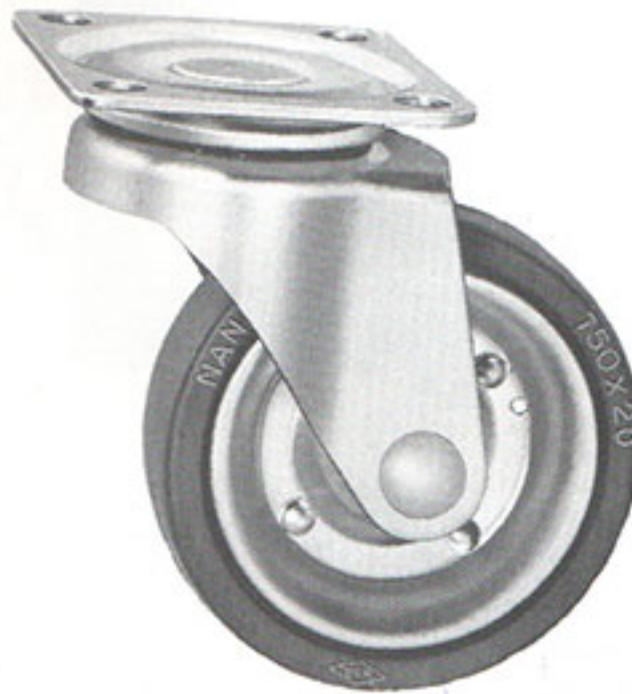
TM/KM SERIES

FOR MEDICAL APPARATUS & KITCHEN EQUIPMENTS

Brake System
(Options)



TMS



TM



KM

■ Fixtures are chrome finished (Anti-rust proof available on request)

Model No.	Choice of Wheels			Bearings	Load Cap (Kg)		Wheel Width	Axle Bore	Height H	Dimensions (m/m)		E	Brake Model
					Safety	Yielding				A × B	X × Y		
TM-75 (3")	G	Rubber (Grey)	Non-marking	Plain	60	120	20	8	96	70×60 (81×62)	54×44 (62×40)	30	TMS-75
	GTR	Rubber (Grey)	Non-marking	Ball	65	130							
	N	Nylon (White)	Non-marking	Plain	70	140							
	AR	Rubber (Black)	Antistatic/NM	Ball	65	130							
	R • HR	Rubber (Black)	Solid Tyre	Plain	60	120							
TM-100 (4")	G	Rubber (Grey)	Non-marking	Plain	70	140	22	8	120	70×60 (81×62)	54×44 (62×40)	33	TMS-100
	GTR	Rubber (Grey)	Non-marking	Ball	75	150							
	N	Nylon (White)	Non-marking	Plain	80	160							
	AR	Rubber (Black)	Antistatic/NM	Ball	75	150							
	R • HR	Rubber (Black)	Solid Tyre	Plain	70	140							
TM-125 (5")	G	Rubber (Grey)	Non-marking	Plain	100	200	26	9.5	158	91×68 (124×89)	74×50 (100×56)	45	TMS-125
	GTR	Rubber (Grey)	Non-marking	Ball	110	220							
	N	Nylon (White)	Non-marking	Plain	120	240							
	AR	Rubber (Black)	Antistatic/NM	Ball	110	220							
	R • HR	Rubber (Black)	Solid Tyre	Plain	100	200							
TM-150 (6")	G	Rubber (Grey)	Non-marking	Plain	120	240	28	9.5	183	107×80	85×56	45	TMS-150
	GTR	Rubber (Grey)	Non-marking	Ball	130	260							
	N	Nylon (White)	Non-marking	Plain	140	280							
	AR	Rubber (Black)	Antistatic/NM	Ball	130	260							
	R • HR	Rubber (Black)	Solid Tyre	Plain	120	240							

Model No.	Choice of Wheels			Bearings	Load Cap (Kg)		Wheel Width	Axle Bore	Height H	Dimensions (m/m)		Bolt P
					Safety	Yielding				A × B	X × Y	
KM-75 (3")	G	Rubber (Grey)	Non-marking	Plain	60	120	20	8	96	68×52 (81×62)	54×28 (64×40)	9
	GTR	Rubber (Grey)	Non-marking	Ball	65	130						
	N	Nylon (White)	Non-marking	Plain	70	140						
	AR	Rubber (Black)	Antistatic/NM	Ball	65	130						
	R • HR	Rubber (Black)	Solid Tyre	Plain	60	120						
KM-100 (4")	G	Rubber (Grey)	Non-marking	Plain	70	140	22	8	120	100×58 (81×62)	80×40 (64×40)	9
	GTR	Rubber (Grey)	Non-marking	Ball	75	150						
	N	Nylon (White)	Non-marking	Plain	80	160						
	AR	Rubber (Black)	Antistatic/NM	Ball	75	150						
	R • HR	Rubber (Black)	Solid Tyre	Plain	70	140						
KM-125 (5")	G	Rubber (Grey)	Non-marking	Plain	100	200	26	9.5	158	117×81 (124×89)	100×50 (100×56)	9
	GTR	Rubber (Grey)	Non-marking	Ball	110	220						
	N	Nylon (White)	Non-marking	Plain	120	240						
	AR	Rubber (Black)	Antistatic/NM	Ball	110	220						
	R • HR	Rubber (Black)	Solid Tyre	Plain	100	200						
KM-150 (6")	G	Rubber (Grey)	Non-marking	Plain	120	240	28	9.5	183	117×81	100×50	9
	GTR	Rubber (Grey)	Non-marking	Ball	130	260						
	N	Nylon (White)	Non-marking	Plain	140	280						
	AR	Rubber (Black)	Antistatic/NM	Ball	130	260						
	R • HR	Rubber (Black)	Solid Tyre	Plain	120	240						

SM SERIES

FOR MEDICAL APPARATUS & KITCHEN EQUIPMENTS

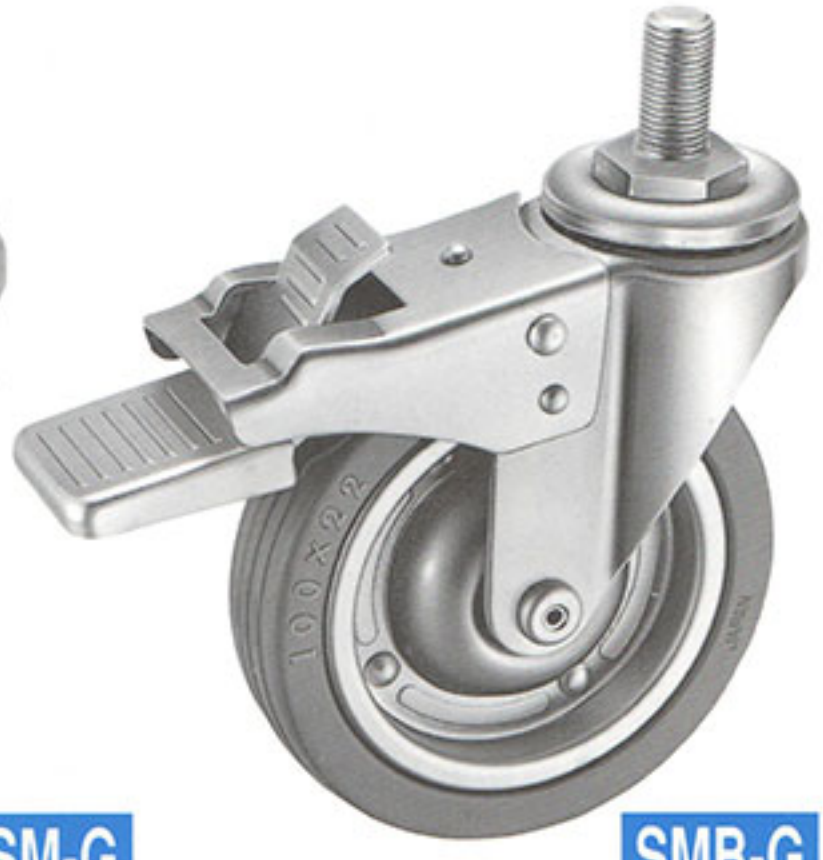
Brake System
(options)



SMS-R



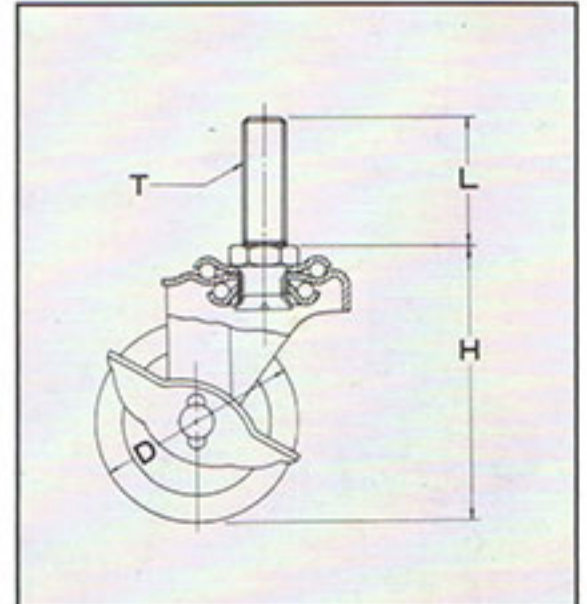
SM-G



SMB-G

■ Fixtures are chrome finished (Anti-rust proof available on request)

Model No.	Choice of Wheels			Bearings	Load Cap (Kg)		Wheel Width	Axle Bore	Height H	Length L	Stem Size T	E	Brake Model
					Safety	Yielding							
SM-75 (3")	G	Rubber (Grey)	Non-marking	Plain	60	120	20	8	100	25	U ¹ / ₂ × 20-1	30	SMB SMS -75
	GTR	Rubber (Grey)	Non-marking	Ball	65	130							
	N	Nylon (White)	Non-marking	Plain	70	140							
	AR	Rubber (Black)	Antistatic/NM	Ball	65	130							
	R • HR	Rubber (Black)	Solid Tyre	Plain	60	120							
SM-100 (4")	G	Rubber (Grey)	Non-marking	Plain	70	140	22	8	124	25	U ¹ / ₂ × 20-1	33	SMB SMS -100
	GTR	Rubber (Grey)	Non-marking	Ball	75	150							
	N	Nylon (White)	Non-marking	Plain	80	160							
	AR	Rubber (Black)	Antistatic/NM	Ball	75	150							
	R • HR	Rubber (Black)	Solid Tyre	Plain	70	140							
SM-125 (5")	G	Rubber (Grey)	Non-marking	Plain	100	200	26	9.5	163	25	U ¹ / ₂ × 20-1	45	SMB SMS -125
	GTR	Rubber (Grey)	Non-marking	Ball	110	220							
	N	Nylon (White)	Non-marking	Plain	120	240							
	AR	Rubber (Black)	Antistatic/NM	Ball	110	220							
	R • HR	Rubber (Black)	Solid Tyre	Plain	100	200							
SM-150 (6")	G	Rubber (Grey)	Non-marking	Plain	120	240	28	9.5	186	25	U ¹ / ₂ × 20-1	45	SMB SMS -150
	GTR	Rubber (Grey)	Non-marking	Ball	130	260							
	N	Nylon (White)	Non-marking	Plain	140	280							
	AR	Rubber (Black)	Antistatic/NM	Ball	130	260							
	R • HR	Rubber (Black)	Solid Tyre	Plain	120	240							



GM SERIES

FOR MEDICAL APPARATUS & KITCHEN EQUIPMENTS

Brake System
(options)



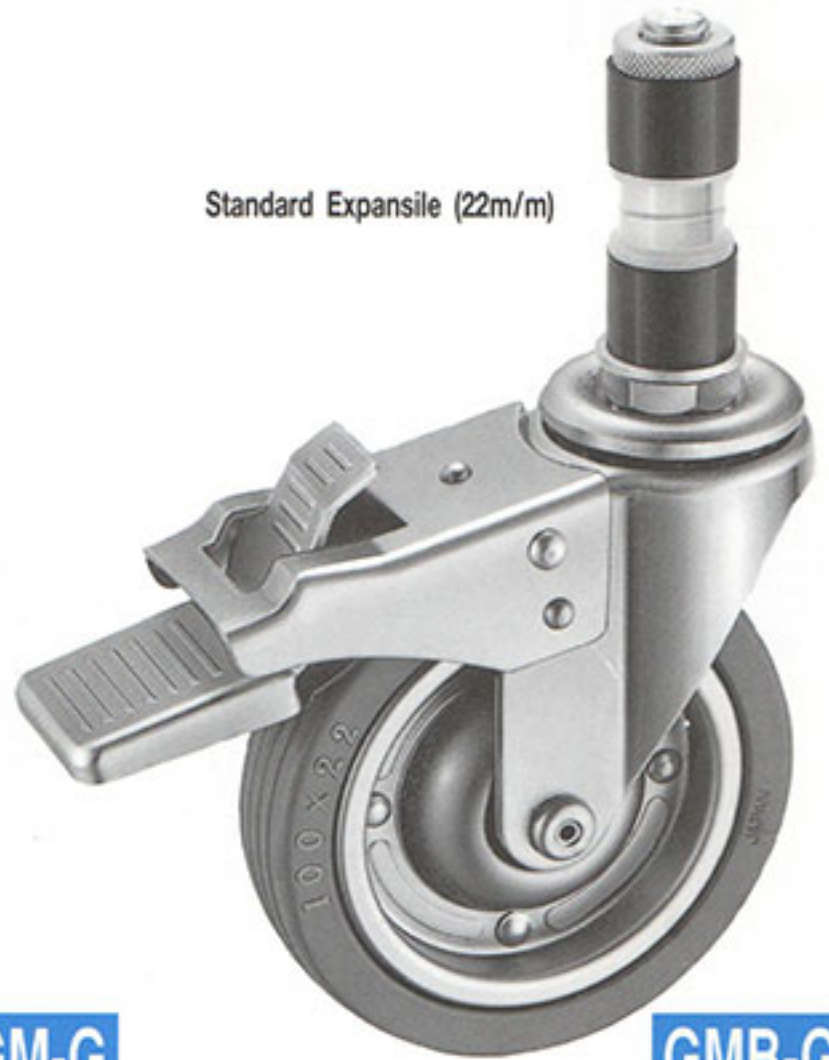
GMS-R

Single Brake



GM-G

Standard Expansile (22m/m)



GMB-G

Double Brake

■ Fixtures are chrome finished (Anti-rust proof available on request)

Model No.	Choice of Wheels			Bearings	Load Cap (Kg)		Wheel Width	Axle Bore	Height H	Length L	Stem Size T	E	Brake Model
					Safety	Yielding							
GM-75 (3")	G	Rubber (Grey)	Non-marking	Plain	60	120	20	8	100	25	18	30	GMB-75 GMS
	GTR	Rubber (Grey)	Non-marking	Ball	65	130							
	N	Nylon (White)	Non-marking	Plain	70	140							
	AR	Rubber (Black)	Antistatic/NM	Ball	65	130							
	R • HR	Rubber (Black)	Solid Tyre	Plain	60	120							
GM-100 (4")	G	Rubber (Grey)	Non-marking	Plain	70	140	22	8	124	25	22	33	GMB-100 GMS
	GTR	Rubber (Grey)	Non-marking	Ball	75	150							
	N	Nylon (White)	Non-marking	Plain	80	160							
	AR	Rubber (Black)	Antistatic/NM	Ball	75	150							
	R • HR	Rubber (Black)	Solid Tyre	Plain	70	140							
GM-125 (5")	G	Rubber (Grey)	Non-marking	Plain	100	200	26	9.5	163	25	34	45	GMB-125 GMS
	GTR	Rubber (Grey)	Non-marking	Ball	110	220							
	N	Nylon (White)	Non-marking	Plain	120	240							
	AR	Rubber (Black)	Antistatic/NM	Ball	110	220							
	R • HR	Rubber (Black)	Solid Tyre	Plain	100	200							
GM-150 (6")	G	Rubber (Grey)	Non-marking	Plain	120	240	28	9.5	186	25	38	45	GMB-150 GMS
	GTR	Rubber (Grey)	Non-marking	Ball	130	260							
	N	Nylon (White)	Non-marking	Plain	140	280							
	AR	Rubber (Black)	Antistatic/NM	Ball	130	260							
	R • HR	Rubber (Black)	Solid Tyre	Plain	120	240							

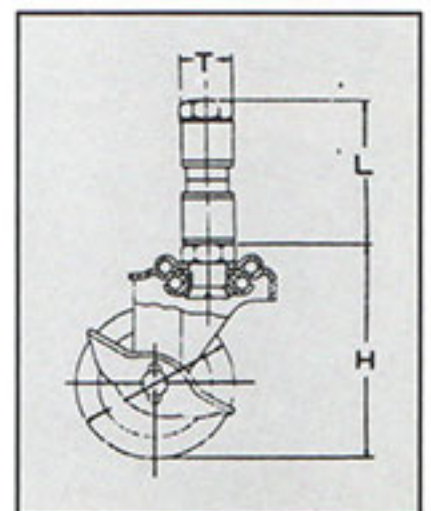


Rubber Expansile
Ø18mm
22mm
34mm



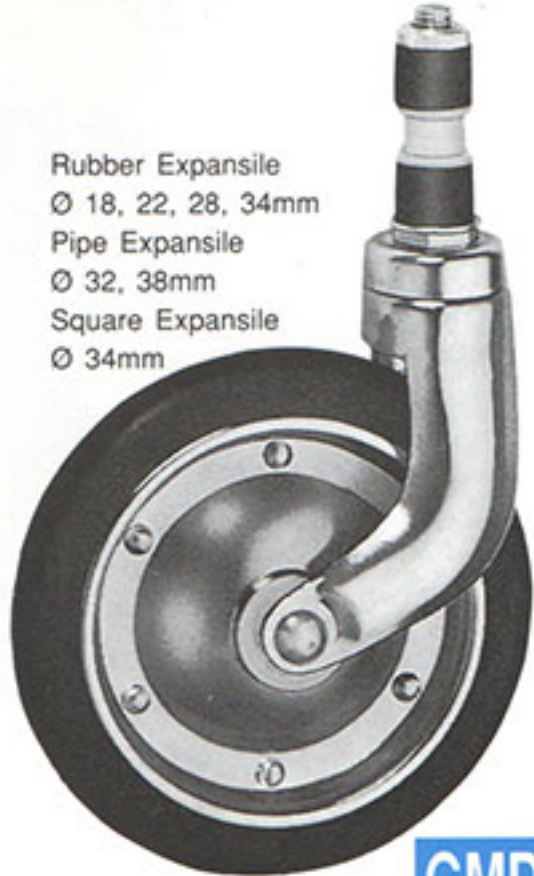
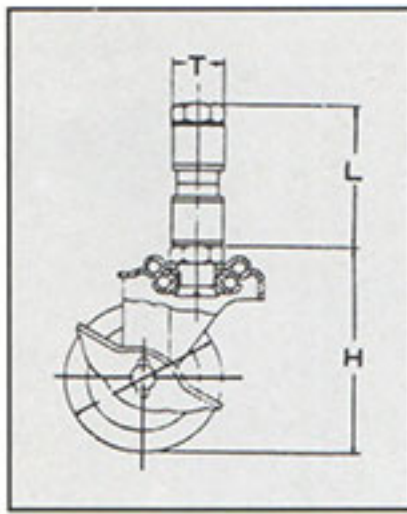
Standard Expansile (28mm)

Pipe Expansile
Ø32mm
38mm
2mm MAX
Thickness



GM SERIES

FOR MEDICAL APPARATUS & KITCHEN EQUIPMENTS



GMDG

Rubber Expansile
 Ø 18, 22, 28, 34mm
 Pipe Expansile
 Ø 32, 38mm
 Square Expansile
 Ø 34mm

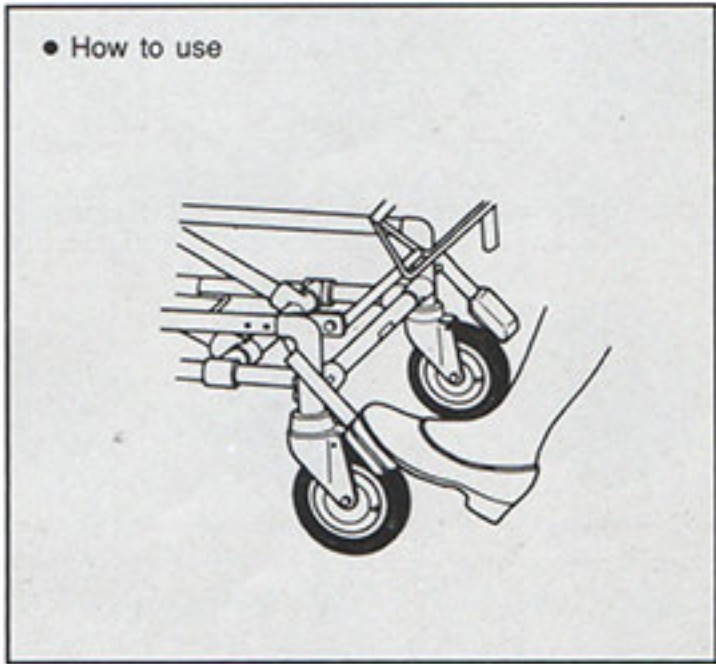
(Three Shift Castor)
 Ø 28mm
 1) Lock 4 wheels together
 2) Unlock 4 wheels together
 3) Lock swivel & wheels together



GPMO (W-7)

■ Fixtures are chromed finished

Model No.	Choice of Wheels			Bearings	Load Cap (Kg)	Wheel Width	Axle Bore	Height H	Length L	Stem Size T	E	Unit Weight (gram)	Brake Model
GMDG-150 (6")	BL	Rubber (Grey)	Non-Marking	Ball	90	22	10	181	60	18	50	1070	—
GMDG-180 (7")	BL	Rubber (Grey)	Non-Marking	Ball	95	28	10	213	60	22	63	1600	—
GMDG-200 (8")	BL	Rubber (Grey)	Non-Marking	Ball	100	28	10	239	60	28	63	1750	—
GPMO-150	BM	Rubber (Grey)	Non-Marking	Ball	120	32	9.5	182	77	34	45	—	W-7
GPMO-200	BL	Rubber (Grey)	Non-Marking	Ball	100	28	10	238	77	38	50	—	W-7



F SERIES

MEDIUM DUTY TRUCK CASTER

420G
Truck Caster

FMG

金具 25・32・38^{mm}はユニクロームメッキ仕上
金具 50・65・75^{mm}はクロームメッキ仕上



FMG-C32



FMG-N38



FMG-R50

Model No.	Choice of Wheels		Bearings	Load Cap (Kg)		Size D	Width W	Height H	Dimensions (m/m)		Bolt P	E
				Safety	Yielding				A x B	X x Y		
FMG-25 420G-	R	Rubber	Plain	12	24	14	4.5	35	35x30	28x23	4.2	9.0
	U	Urethane		14	28							
	N	Nylon		14	28							
	C	Cast-Iron		16	32							
FMG-32 420G-	R	Rubber	Plain	16	32	16	4.8	42	38x32	30x24	4.2	11.0
	U	Urethane		22	44							
	N	Nylon		22	44							
	C	Cast-Iron		27	54							
FMG-38 420G-	R	Rubber	Plain	27	54	20	6.0	50	46x38	36x28	5.3	12.0
	U	Urethane		30	60							
	N	Nylon		30	60							
	C	Cast-Iron		38	76							
FMG-50 420G-	R • GR	Rubber	Plain	38	76	24	6.5	65	59x47	46x35	6.5	16.0
	U	Urethane		45	90							
	N	Nylon		45	90							
	C	Cast-Iron		50	100							
FMG-65 420G-	R • GR	Rubber	Plain	55	110	24	8.5	80	70x58	55x42	8.8	21.0
	U	Urethane		65	130							
	N	Nylon		65	130							
	C	Cast-Iron		70	140							
FMG-75 420G-	R • GR	Rubber	Plain	60	120	24	8.5	90	70x58	55x42	8.8	21.0
	U	Urethane		70	140							
	N	Nylon		70	140							
	C	Cast-Iron		75	150							

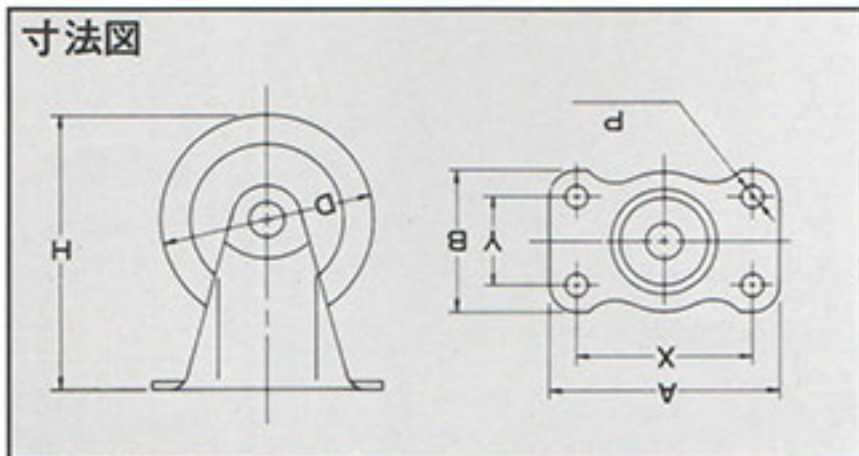
Replacement wheels for "420/G/R" series casters

Rubber	Hard Rubber	Nylon	Cast Iron	Grey Rubber	Polyurethane
(R)25 - 75m/m	(HR)50 - 75m/m	(N)25 - 75m/m	(C)25 - 75m/m	(GR)50 - 75m/m	(U)25 - 75m/m

F SERIES

MEDIUM DUTY TRUCK CASTOR

420R Truck Caster **FMR**



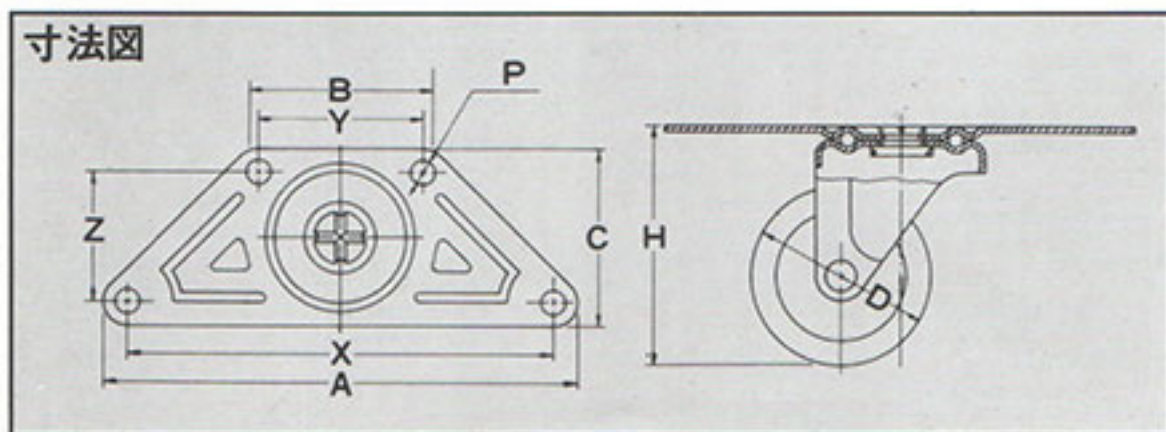
FMR-C38

FMR-R50

Hardware : Uni-chrome plate finish, 25, 32 & 38mm.

Hardware : Chrome plate finish, 50, 65 & 75mm.

Model No.	Choice of Wheels		Bearings	Load Cap (Kg)		Wheel Width	Axle Bore	Height H	Dimensions (m/m)		Bolt P
				Safety	Yielding				A x B	X x Y	
FMR-25 420R-	R	Rubber	Plain	12	24	14	4.5	35	36 x 18	29 x 10	4.2
	U	Urethane		14	28						
	N	Nylon		14	28						
	C	Cast-Iron		16	32						
FMR-32 420R-	R	Rubber	Plain	16	32	16	4.8	42	36 x 20	29 x 10	4.2
	U	Urethane		22	44						
	N	Nylon		22	44						
	C	Cast-Iron		27	54						
FMR-38 420R-	R	Rubber	Plain	27	54	20	6.0	50	46 x 25	36 x 15	5.3
	U	Urethane		30	60						
	N	Nylon		30	60						
	C	Cast-Iron		38	76						
FMR-50 420R-	R • GR	Rubber	Plain	38	76	24	6.5	65	58 x 40	45 x 25	6.5
	U	Urethane		45	90						
	N	Nylon		45	90						
	C	Cast-Iron		50	100						
FMR-65 420R-	R • GR	Rubber	Plain	55	110	24	8.5	80	70 x 47	55 x 28	8.8
	U	Urethane		65	130						
	N	Nylon		65	130						
	C	Cast-Iron		70	140						
FMR-75 420R-	R • GR	Rubber	Plain	60	120	24	8.5	90	70 x 47	55 x 28	8.8
	U	Urethane		70	140						
	N	Nylon		70	140						
	C	Cast-Iron		75	150						



220G
Corner Plate
Caster

FMGK

● Casters with irregular plate, enabling mounting in any corner. 金具クロームメッキ仕上

FMGK-50 220G-	R • GR	Rubber	Plain	35	70	24	6.5	66	135 x 52 x 50	122 x 46 x 38	6.5	16.0
	U	Urethane		42	84							
	N	Nylon		42	84							
	C	Cast-Iron		45	90							
FMGK-65 220G-	R • GR	Rubber	Plain	45	90	24	8.5	80	160 x 63 x 58	139 x 55 x 42	8.8	21.0
	U	Urethane		60	120							
	N	Nylon		60	120							
	C	Cast-Iron		65	130							
FMGK-75 220G-	R • GR	Rubber	Plain	55	110	24	8.5	90	160 x 63 x 58	139 x 55 x 42	8.8	21.0
	U	Urethane		70	140							
	N	Nylon		90	180							
	C	Cast-Iron		80	160							

E SERIES

LIGHT DUTY TRUCK CASTOR

Brake System
(Options)



ETMS



EKM

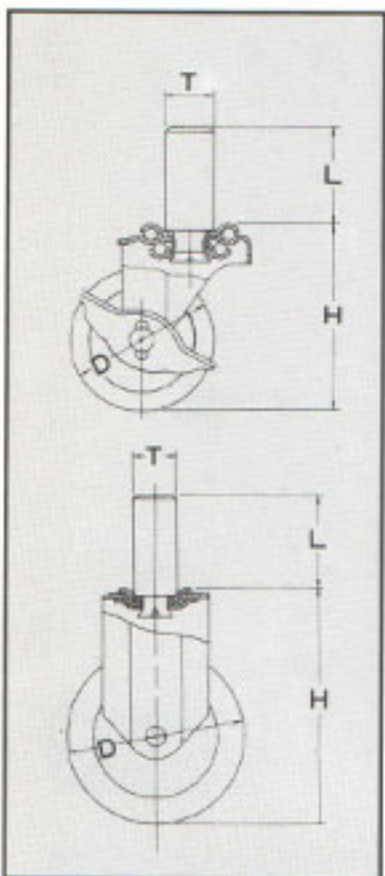


ETM

Model No.	Choice of Wheels		Bearings	Load Cap (Kg)		Wheel Width	Axle Bore	Height H	Dimensions (m/m)		Bolt P	E	Brake Model
				Safety	Yielding				A x B	X x Y			
ETM-40 (1 1/2")	R	Rubber (Black)	Plain	27	54	20	6.0	58	51 x 31	40 x 20	5.5	20	ETMS-40
	GR	Rubber (Grey)	Plain	27	54								
	U	Urethane	Plain	30	60								
	N	Nylon	Plain	30	60								
ETM-50 (2")	R • HR	Rubber (Black)	Plain	38	76	24	6.5	65	70 x 42	56 x 28	6.5	21	ETMS-50
	GR	Rubber (Grey)	Plain	38	76								
	U	Urethane	Plain	45	90								
	N	Nylon	Plain	45	90								
ETM-65 (2 1/2")	R • HR	Rubber (Black)	Plain	45	90	24	8.5	82	70 x 42	56 x 28	6.5	24	ETMS-65
	GR	Rubber (Grey)	Plain	45	90								
	TR	Rubber (Grey)	Ball	50	100								
	U	Urethane	Plain	55	110								
	N	Nylon	Plain	55	110								
ETM-75 (3")	R • HR	Rubber (Black)	Plain	50	100	24	8.5	92	70 x 42	56 x 28	6.5	29	ETMS-75
	GR	Rubber (Grey)	Plain	50	100								
	TR	Rubber (Grey)	Ball	55	110								
	U	Urethane	Plain	60	120								
	N	Nylon	Plain	60	120								
ETM-100 (4")	R • HR	Rubber (Black)	Plain	60	120	24	8.5	122	100 x 53	82 x 40	8.8	32	ETMS-100
	G	Rubber (Grey)	Plain	60	120								
	TR	Rubber (Grey)	Ball	65	130								
	U • UB	Urethane	Plain • Ball	70	140								
	N	Nylon	Plain	70	140								
ETM-125 (5")	R • HR	Rubber (Black)	Plain	70	140	26	9.5	148	100 x 58	82 x 40	8.8	39	ETMS-125
	G	Rubber (Grey)	Plain	70	140								
	TR	Rubber (Grey)	Ball	80	160								
	N	Nylon	Plain	80	160								
ETM-150 (6")	R • HR	Rubber (Black)	Plain	75	150	26	9.5	176	100 x 58	80 x 40	8.8	42	ETMS-150
	G	Rubber (Grey)	Plain	75	150								
	TR	Rubber (Grey)	Ball	85	170								
	N	Nylon	Plain	85	170								

Model No.	Choice of Wheels		Bearings	Load Cap (Kg)		Wheel Width	Axle Bore	Height H	Dimensions (m/m)		Bolt P
				Safety	Yielding				A x B	X x Y	
EKM-50 (2")	R • HR	Rubber (Black)	Plain	38	76	20	6.5	65	70 x 42	56 x 28	6.5
	GR	Rubber (Grey)	Plain	38	76						
	U	Urethane	Plain	45	90						
	N	Nylon	Plain	45	90						
EKM-65 (2 1/2")	R • HR	Rubber (Black)	Plain	45	90	24	8.5	82	70 x 42	56 x 28	6.5
	GR	Rubber (Grey)	Plain	45	90						
	TR	Rubber (Grey)	Ball	50	100						
	U	Urethane	Plain	55	110						
	N	Nylon	Plain	55	110						
EKM-75 (3")	R • HR	Rubber (Black)	Plain	50	100	24	8.5	92	70 x 42	56 x 28	6.5
	GR	Rubber (Grey)	Plain	50	100						
	TR	Rubber (Grey)	Ball	55	110						
	U	Urethane	Plain	60	120						
	N	Nylon	Plain	60	120						
EKM-100 (4")	R • HR	Rubber (Black)	Plain	60	120	24	8.5	122	100 x 58	82 x 40	8.8
	G	Rubber (Grey)	Plain	60	120						
	TR	Rubber (Grey)	Ball	65	130						
	U • UB	Urethane	Plain • Ball	70	140						
	N	Nylon	Plain	70	140						
EKM-125 (5")	R • HR	Rubber (Black)	Plain	70	140	26	9.5	148	100 x 58	82 x 40	8.8
	G	Rubber (Grey)	Plain	70	140						
	TR	Rubber (Grey)	Ball	80	160						
	U	Urethane	Plain	80	160						
EKM-150 (6")	R • HR	Rubber (Black)	Plain	75	150	26	9.5	176	100 x 58	82 x 40	8.8
	G	Rubber (Grey)	Plain	75	150						
	TR	Rubber (Grey)	Ball	85	170						
	U	Urethane	Plain	85	170						

E SERIES LIGHT DUTY TRUCK CASTOR



ESMS



ESM

Model No.	Choice of Wheels		Bearings	Load Cap (Kg)		Wheel Width	Axle Bore	Height H	Length L	Stem Size T	E	Brake Model
				Safety	Yielding							
ESM-40 (1 1/2")	R	Rubber (Black)	Plain	27	54	20	6.0	59	35	M12×1.75	20	ESMS-40
	GR	Rubber (Grey)	Plain	27	54							
	U	Urethane	Plain	30	60							
	N	Nylon	Plain	30	60							
ESM-50 (2")	R • HR	Rubber (Black)	Plain	38	76	24	6.5	68	35	M12×1.75	21	ESMS-50
	GR	Rubber (Grey)	Plain	38	76							
	U	Urethane	Plain	45	90							
	N	Nylon	Plain	45	90							
ESM-65 (2 1/2")	R • HR	Rubber (Black)	Plain	45	90	24	8.5	85	35	M12×1.75	24	ESMS-65
	GR	Rubber (Grey)	Plain	45	90							
	TR	Rubber (Grey)	Ball	50	100							
	U	Urethane	Plain	55	110							
	N	Nylon	Plain	55	110							
ESM-75 (3")	R • HR	Rubber (Black)	Plain	50	100	24	8.5	95	35	M12×1.75	29	ESMS-75
	GR	Rubber (Grey)	Plain	50	100							
	TR	Rubber (Grey)	Ball	55	110							
	U	Urethane	Plain	60	120							
	N	Nylon	Plain	60	120							
ESM-100 (4")	R • HR	Rubber (Black)	Plain	60	120	24	8.5	126	40	M16×2.0	32	ESMS-100
	GR	Rubber (Grey)	Plain	60	120							
	TR	Rubber (Grey)	Ball	65	130							
	U	Urethane	Ball	70	140							
	N	Nylon	Plain	70	140							
ESM-125 (5")	R • HR	Rubber (Black)	Plain	70	140	26	9.5	152	40	M16×2.0	39	ESMS-125
	GR	Rubber (Grey)	Plain	70	140							
	TR	Rubber (Grey)	Ball	80	160							
	N	Nylon	Plain	80	160							
ESM-150 (6")	R • HR	Rubber (Black)	Plain	75	150	26	9.5	179	40	M16×2.0	42	ESMS-150
	GR	Rubber (Grey)	Plain	75	150							
	TR	Rubber (Grey)	Ball	85	170							
	N	Nylon	Plain	85	170							



EK



EKS

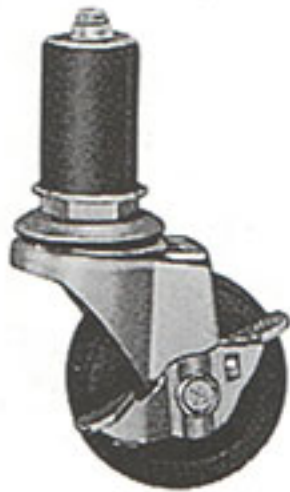


EKR

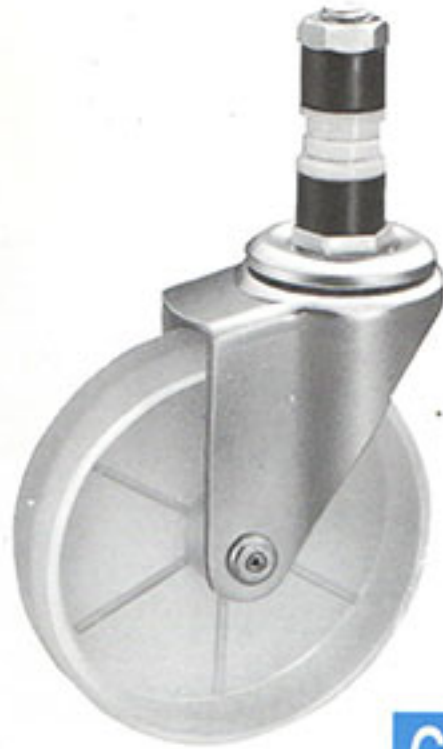
Model No.	Choice of Wheels		Bearings	Load Cap (Kg)		Wheel Width	Axle Bore	Height H	Length L	Stem Size T	E	Brake Model
				Safety	Yielding							
EK-40	R	Rubber (Black)	Plain	27	54	20	6.0	55	35	18	19	EKS-40
	GR	Rubber (Grey)	Plain	27	54							
	U	Urethane	Plain	30	60							
	N	Nylon	Plain	30	60							
EK-50	R • HR	Rubber (Black)	Plain	38	76	24	6.4	64	35	18	21	EKS-50
	GR	Rubber (Grey)	Plain	38	76							
	U	Urethane	Plain	45	90							
	N	Nylon	Plain	45	90							
EK-65 EKR-65	R • HR	Rubber (Black)	Plain	45	90	24	8.5	81	35	18	24	EKS-65
	GR	Rubber (Grey)	Plain	45	90							
	TR	Rubber (Grey)	Ball	50	100							
	U	Urethane	Plain	55	110							
	N	Nylon	Plain	55	110							
EK-75 EKR-75	R • HR	Rubber (Black)	Plain	50	100	24	8.5	90	35	18	29	EKS-75
	GR	Rubber (Grey)	Plain	50	100							
	TR	Rubber (Grey)	Ball	55	110							
	U	Urethane	Plain	60	120							
	N	Nylon	Plain	60	120							
EK-100 EKR-100	R • HR	Rubber (Black)	Plain	60	120	24	8.5	122	40	22	32	EKS-100
	GR	Rubber (Grey)	Plain	60	120							
	TR	Rubber (Grey)	Ball	65	130							
	U	Urethane	Ball	70	140							
	N	Nylon	Plain	70	140							
EK-125 EKR-125	R • HR	Rubber (Black)	Plain	70	140	26	9.5	148	40	22	39	EKS-125
	G	Rubber (Grey)	Plain	70	140							
	TR	Rubber (Grey)	Ball	80	160							
	N	Nylon	Plain	80	160							
EK-150 EKR-150	R • HR	Rubber (Black)	Plain	75	150	26	9.5	175	40	22	42	EKS-150
	G	Rubber (Grey)	Plain	75	150							
	TR	Rubber (Grey)	Ball	85	170							
	N	Nylon	Plain	85	170							

GR SERIES FOR GENERAL USE

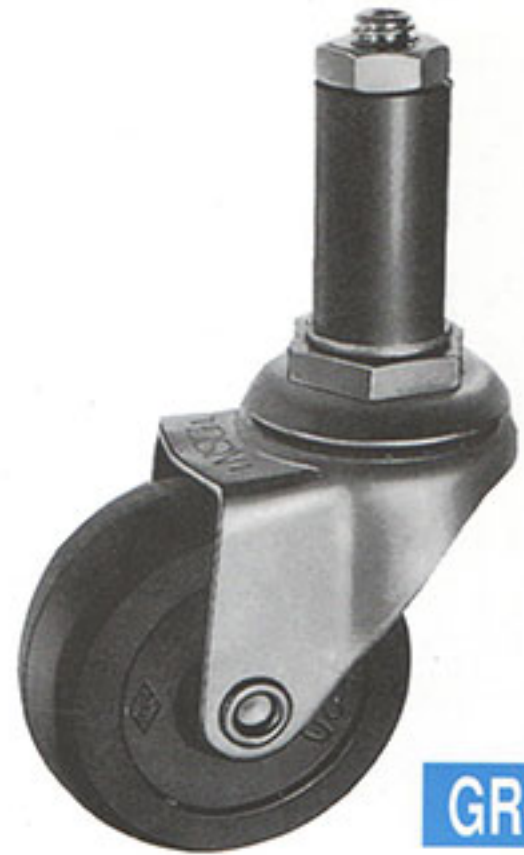
Brake System
(Options)



GR-S1



GR-NM



GR-RM

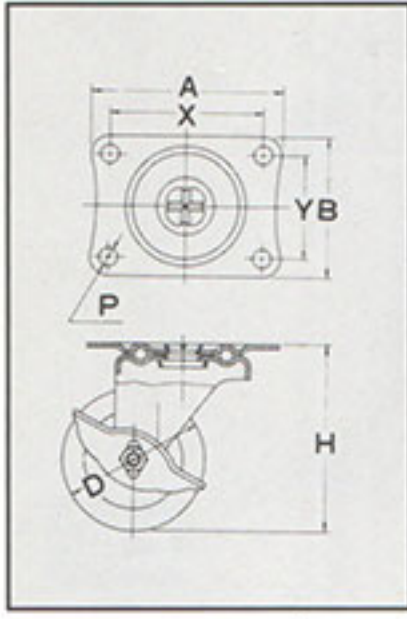
Model No.	Choice of Wheels			Bearings	Load Cap (Kg)		Wheel Width	Axle Bore	Height H	Length L	Stem Size T	E	Brake Model
					Safety	Yielding							
GR-32	RM	Rubber	Black	Plain	18	36	16	4.5	45	40	12.5-16 18-22	12	—
	NM	Nylon (White)	Non-Marking	Plain	23	46							
GR-40	RM	Rubber	Black	Plain	32	64	18	6	58	40	12.5-16 18-22	20	S-1
	NM	Nylon (White)	Non-Marking	Plain	32	64							
	NTP	Vinyl	Non-Marking	Plain	32	64							
GR-50	RM	Rubber	Black	Plain	40	80	20	6	67	40	12.5-16 18-22	18	S-1 W-1R
	NM	Nylon (White)	Non-Marking	Plain	40	80							
	NTP	Vinyl	Non-Marking	Plain	40	80							
GR-65	RM	Rubber	Black	Plain	55	110	22	8	85	40	18-22	25	S-2 W-1R
	NM	Nylon (White)	Non-Marking	Plain	65	130	25						

WHEELS MATCHING - TM • GM • SM SERIES

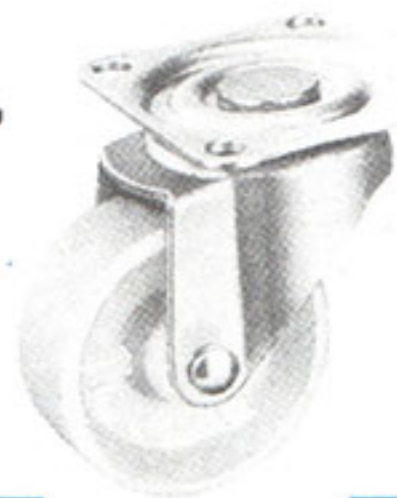
(G) Series - Grey Rubber Wheel (Non-Marking) 50 ~ 150 m/m	(N) Series - Nylon Wheel 40 ~ 150 m/m	(R) Series - Rubber Wheel 40 ~ 150 m/m
(HR) Series - Hard Rubber Wheel 50 ~ 150 m/m	(GTR) Series - Grey Rubber Wheel (Non-Marking & Ball Bearing) 75 ~ 150 m/m	(AR) Series - Antistatic Rubber Wheel (Non-Marking & Ball Bearing) 75 ~ 125 m/m

M SERIES

LIGHT DUTY TRUCK CASTOR



MR



MG-N



MGS-R

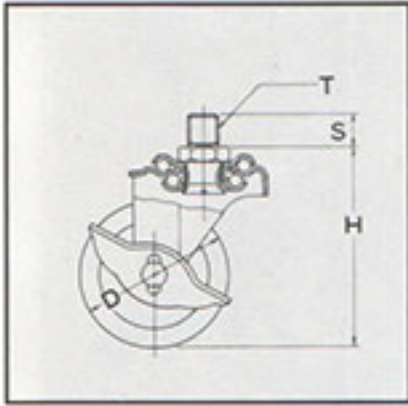
金具ユニクロームメッキ仕上

Model No.	Choice of Wheels		Bearings	Load Cap (Kg)		Wheel Width	Axle Bore	Height H	Dimensions (m/m)		Bolt P	E	Brake Model
				Safety	Yielding				A x B	X x Y			
MG-25 (1")	R	Rubber	Plain	7	14	14	4.5	35	35x30	28x23	4.2	12	MGS-25
	U	Urethane		9	18								
	N	Nylon		9	18								
	C	Cast-Iron		10	20								
MG-32 (1 1/4")	R	Rubber	Plain	10	20	16	4.8	42	38x32	30x24	4.2	13.0	MGS-32
	U	Urethane		12	24								
	N	Nylon		12	24								
	C	Cast-Iron		15	30								
MG-40 (1 1/2")	R • NTP	Rubber	Plain	15	30	20	6.0	50	46x38	36x28	5.3	20.0	MGS-40
	U	Urethane		20	40								
	N	Nylon		20	40								
	C	Cast-Iron		25	50								
MG-50 (2")	R • NTP	Rubber	Plain	25	50	24	6.5	65	59x47	46x35	6.5	21.0	MGS-50
	U	Urethane		30	60								
	N	Nylon		30	60								
	C	Cast-Iron		35	70								
MG-65 (2 1/2")	R	Rubber	Plain	30	60	24	8.5	80	70x58	55x42	8.8	24.0	MGS-65
	U	Urethane		35	70								
	N	Nylon		35	70								
	C	Cast-Iron		40	80								
MG-75 (3")	R	Rubber	Plain	35	70	24	8.5	90	70x58	55x42	8.8	29.0	MGS-75
	U	Urethane		40	80								
	N	Nylon		40	80								
	C	Cast-Iron		45	90								

Model No.	Choice of Wheels		Bearings	Load Cap (Kg)		Wheel Width	Axle Bore	Height H	Dimensions (m/m)		Bolt P	E	Brake Model
				Safety	Yielding				A x B	X x Y			
MR-25 (1")	R	Rubber	Plain	7	14	14	4.5	35	36x18	29x10	4.2	—	—
	U	Urethane		9	18								
	N	Nylon		9	18								
	C	Cast-Iron		10	20								
MR-32 (1 1/4")	R	Rubber	Plain	10	20	16	4.8	42	36x20	29x10	4.2	—	—
	U	Urethane		12	24								
	N	Nylon		12	24								
	C	Cast-Iron		15	30								
MR-40 (1 1/2")	R • NTP	Rubber	Plain	15	30	20	6.0	50	46x25	36x15	6.5	—	—
	U	Urethane		20	40								
	N	Nylon		20	40								
	C	Cast-Iron		25	50								
MR-50 (2")	R • NTP	Rubber	Plain	25	50	24	6.5	65	58x40	45x25	6.5	—	—
	U	Urethane		30	60								
	N	Nylon		30	60								
	C	Cast-Iron		35	70								
MR-65 (2 1/2")	R	Rubber	Plain	30	60	24	8.5	80	70x47	55x28	8.8	—	—
	U	Urethane		35	70								
	N	Nylon		35	70								
	C	Cast-Iron		40	80								
MR-75 (3")	R	Rubber	Plain	35	70	24	8.5	90	70x47	55x28	8.8	—	—
	U	Urethane		40	80								
	N	Nylon		40	80								
	C	Cast-Iron		45	90								

M SERIES

LIGHT DUTY TRUCK CASTOR



本体クロームメッキ仕上
本体ユニクロームメッキ仕上









MA



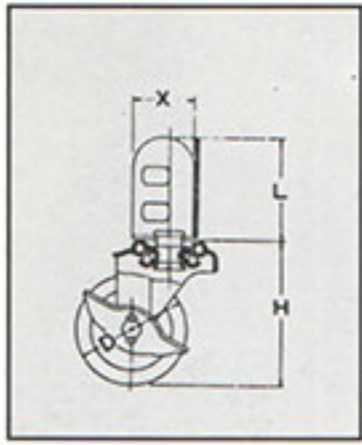
MAS

Model No.	Choice of Wheels		Bearings	Load Cap (Kg)		Wheel Width	Axle Bore	Height H	Length L	Angle Stem X	E	Brake Model
				Safety	Yielding							
MA-32 (1 1/4")	R	Rubber	Plain	7	14	16	4.8	47	14	SAE 3/8	13	MAS-32
	U	Urethane		9	18							
	N	Nylon		9	18							
	C	Cast-Iron		10	20							
MA-40 (1 1/2")	R • NTP	Rubber	Plain	10	20	20	6.0	60	14	1/2 U20	20	MAS-40
	U	Urethane		12	24							
	N	Nylon		12	24							
	C	Cast-Iron		15	30							
MA-50 (2")	R • NTP	Rubber	Plain	15	30	24	6.5	68	14	1/2 U20	21	MAS-50
	U	Urethane		20	40							
	N	Nylon		20	40							
	C	Cast-Iron		25	50							
MA-65 (2 1/2")	R • NTP	Rubber	Plain	25	50	24	8.5	85	14	1/2 U20	24	MAS-65
	U	Urethane		30	60							
	N	Nylon		30	60							
	C	Cast-Iron		35	70							
MA-75 (3")	R • NTP	Rubber	Plain	35	70	24	8.5	95	14	1/2 U20	29	MAS-75
	U	Urethane		40	80							
	N	Nylon		40	80							
	C	Cast-Iron		45	90							

WHEELS MATCHING - MG • MR • MA • MD • MF • MC SERIES

<p>Cast iron</p>  <p>(C)25 - 75m/m</p>	<p>Polypropylene center (PVC)</p>  <p>(NTP)50 - 75m/m</p>	<p>Polyurethane</p>  <p>(U)25 - 75m/m</p>
<p>All rubber</p>  <p>(R)25 - 75m/m</p>	<p>Hard rubber</p>  <p>(HR)50 - 75m/m</p>	<p>Nylon</p>  <p>(N)25 - 75m/m</p>

M SERIES LIGHT DUTY TRUCK CASTOR

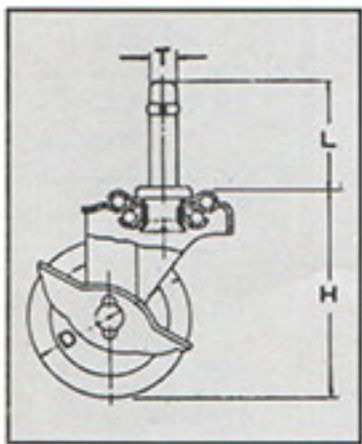


MD



MDS

Model No.	Choice of Wheels		Bearings	Load Cap (Kg)		Wheel Width	Axle Bore	Height H	Length L	Angle Stem X	Bolt P	E	Brake Model
				Safety	Yielding								
MD-40 (1 1/2")	R • GR	Rubber	Plain	16	32	20	6.0	56	55	30	5.3	20	MDS-40
	U	Urethane		20	40								
	N	Nylon		20	40								
	C	Cast-Iron		25	50								
MD-50 (2")	R • GR	Rubber	Plain	28	56	24	6.5	67	55	30	6.5	21	MDS-50
	U	Urethane		33	66								
	N	Nylon		33	66								
	C	Cast-Iron		38	76								
MD-65 (2 1/2")	R • GR	Rubber	Plain	35	70	24	8.5	85	55	30	8.8	24	MDS-65
	U	Urethane		40	80								
	N	Nylon		40	80								
	C	Cast-Iron		45	90								
MD-75 (3")	R • GR	Rubber	Plain	40	80	24	8.5	98	55	30	8.8	29	MDS-75
	U	Urethane		45	90								
	N	Nylon		45	90								
	C	Cast-Iron		50	100								



MF



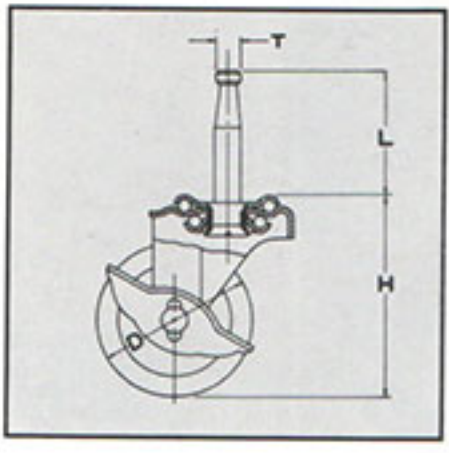
MF



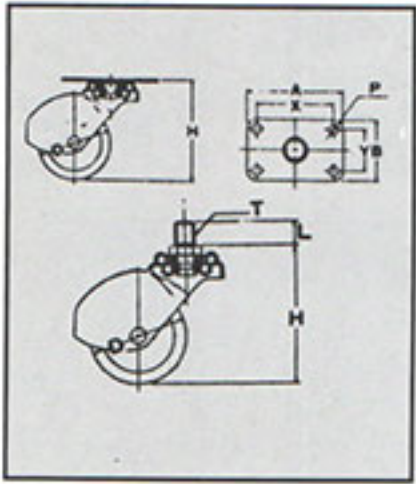
MFS

Model No.	Choice of Wheels		Bearings	Load Cap (Kg)		Wheel Width	Axle Bore	Height H	Length L	Stem Size T	E	Brake Model
				Safety	Yielding							
MF-25 (1")	R	Rubber	Plain	7	14	14	4.5	38	38	11	12	—
	U	Urethane		9	18							
	N	Nylon		9	18							
	C	Cast-Iron		10	20							
MF-32 (1 1/4")	R	Rubber	Plain	10	20	16	4.8	43	38	11	13	—
	U	Urethane		12	24							
	N	Nylon		12	24							
	C	Cast-Iron		15	30							
MF40 (1 1/2")	R • GR	Rubber	Plain	15	30	20	6.0	56	38	11	20	MFS-40
	U	Urethane		20	40							
	N	Nylon		20	40							
	C	Cast-Iron		25	50							
MF-50 (2")	R • GR	Rubber	Plain	25	50	24	6.5	64	38	11	21	MFS-50
	U	Urethane		30	60							
	N	Nylon		30	60							
	C	Cast-Iron		35	70							
MF-65 (2 1/2")	R • GR	Rubber	Plain	30	60	24	8.5	80	38	11	24	MFS-65
	U	Urethane		35	70							
	N	Nylon		35	70							
	C	Cast-Iron		40	80							
MF-75 (3")	R • GR	Rubber	Plain	35	70	24	8.5	90	38	11	29	MFS-75
	U	Urethane		40	80							
	N	Nylon		40	80							
	C	Cast-Iron		45	90							

M SERIES LIGHT DUTY TRUCK CASTOR

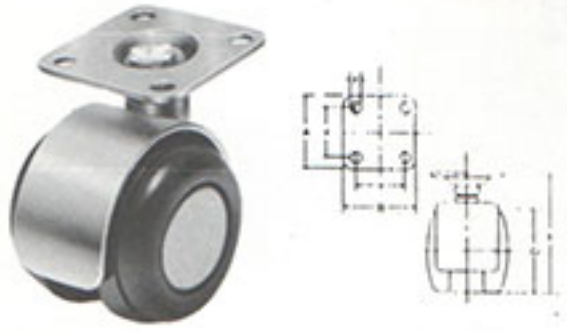


Model No.	Choice of Wheels		Bearings	Load Cap (Kg)		Wheel Width	Axle Bore	Height H	Length L	Stem Size T	E	Brake Model
				Safety	Yielding							
MC-25 (1")	R	Rubber	Plain	7	14	14	4.5	38	38	8	12	—
	U	Urethane		9	18							
	N	Nylon		9	18							
	C	Cast-Iron		10	20							
MC-32 (1 1/4")	R	Rubber	Plain	10	20	16	4.8	43	38	8	13	—
	U	Urethane		12	24							
	N	Nylon		12	24							
	C	Cast-Iron		15	30							
MC-40 (1 1/2")	R	Rubber	Plain	15	30	20	6.0	56	38	8	20	MCS-40
	U	Urethane		20	40							
	N	Nylon		20	40							
	C	Cast-Iron		25	50							
MC-50 (2")	R • GR	Rubber	Plain	25	50	24	6.5	64	38	8	21	MCS-50
	U	Urethane		30	60							
	N	Nylon		30	60							
	C	Cast-Iron		35	70							
MC-65 (2 1/2")	R • GR	Rubber	Plain	30	60	24	8.5	80	38	8	24	MCS-65
	U	Urethane		35	70							
	N	Nylon		35	70							
	C	Cast-Iron		40	80							
MC-75 (3")	R • GR	Rubber	Plain	35	70	24	8.5	90	38	8	29	MCS-75
	U	Urethane		40	80							
	N	Nylon		40	80							
	C	Cast-Iron		45	90							



Model No.	Choice of Wheels		Bearings	Load Cap (Kg)		Wheel Width	Axle Bore	Height H	Length L	Stem Size T	T	E
				Safety	Yielding							
MKA-50 (2")	R	Rubber	Plain	25	50	24	6.5	70	13	SAE 1/2 x 20 M12 x 1.25	12	25
	U	Urethane		30	60							
	N	Nylon		30	60							
	C	Cast-Iron		35	70							
MKC-50 (2")	R	Rubber	Plain	25	50	24	6.5	65	38	M12 x 1.25	8	25
	U	Urethane		30	60							
	N	Nylon		30	60							
	C	Cast-Iron		35	70							
MKF-50 (2")	R	Rubber	Plain	25	50	24	6.5	65	38	M12 x 1.25	11	25
	U	Urethane		30	60							
	N	Nylon		30	60							
	C	Cast-Iron		35	70							
MKG-50 (2")	R	Rubber	Plain	25	50	24	6.5	67	51 x 31 39 x 39	40 x 20 26 x 26	5.5 5	25
	U	Urethane		30	60							
	N	Nylon		30	60							
	C	Cast-Iron		35	70							

N SERIES TWIN WHEELS FOR FURNITURE



Model No.	D	Load (Kg)	N	A × B	X × Y	P	Brake
OWP-43N	42	30	54	38×38	27×27	5-2	OWP-43NS



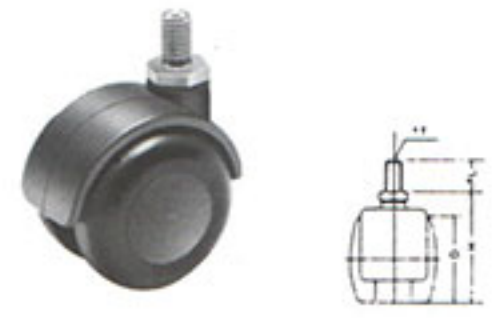
Model No.	D	Load (Kg)	W	L	T	Brake
OWT-43N	42	30	51	15	3/8"	OWT-43NS



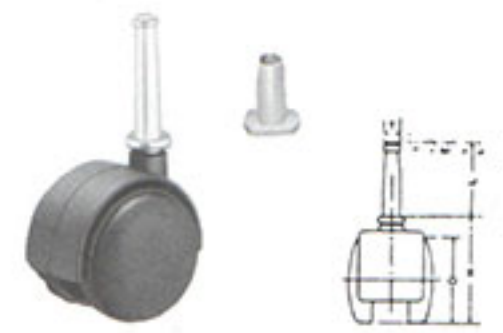
Model No.	D	Load (Kg)	W	L	T	Brake
OWT-43N	42	30	51	15	3/8"	OWT-43NS



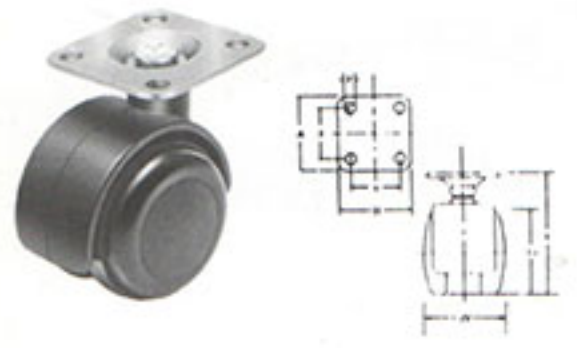
Model No.	D	Load (Kg)	N	A × B	X × Y	P	Brake
KWP-30N	30	20	54	24×19 28×28	17.5×17.5 18×18	4 5	-
KWP-40N	42	30	59	38×38	26×26 27×27	6	KWP-40NS
KWP-50N	52	35	63	38×38	26×26 27×27	6	KWP-50NS



Model No.	D	Load (Kg)	W	L	T	Brake
KWT-30N	30	20	39	15	M6	-
KWT-40N	42	30	54	15	M8	KWT-40NS
KWT-50N	52	35	60	15	3/8"	KWT-50NS



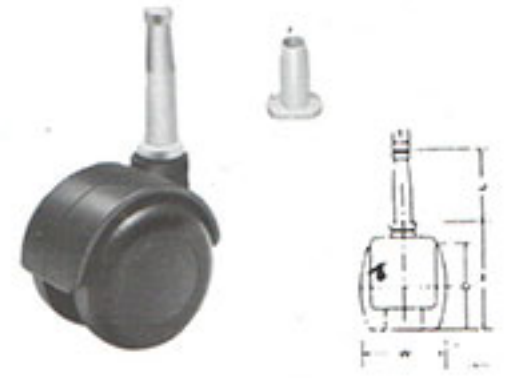
Model No.	D	Load (Kg)	W	L	T	Brake
KWS-30N	30	20	39	25	6	-
KWS-40N	42	30	54	36	8	KWS-40NS
KWS-50N	52	35	60	36	8	KWS-50NS



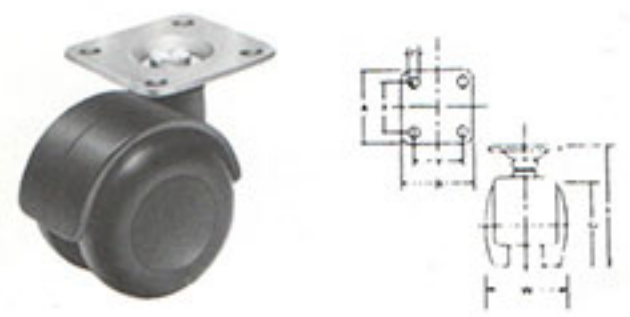
Model No.	D	Load (Kg)	N	A × B	X × Y	P
PWP-43N	42	35	57	38×38	27×27	5-2



Model No.	D	Load (Kg)	W	L	T	Brake
PWT-43N	42	35	55	15	M8-3/8"	PWT-43NS



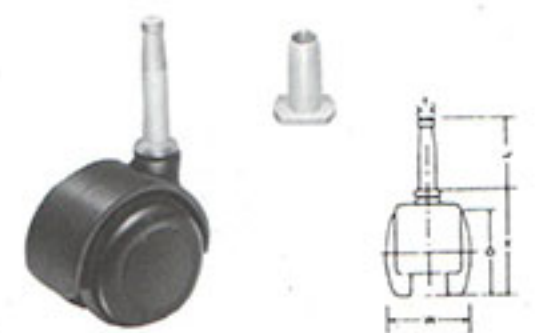
Model No.	D	Load (Kg)	W	N	L	T	Brake
PWT-43N	42	35	40	52	38	8	PWS-43NS



Model No.	D	Load (Kg)	N	A × B	X × Y	P
SWP-40N	42	35	57	38×38	27×27	5-2



Model No.	D	Load (Kg)	W	N	L	T	Brake
SWT-40N	42	35	37	55	15	M8-3/8"	SWT-40NS



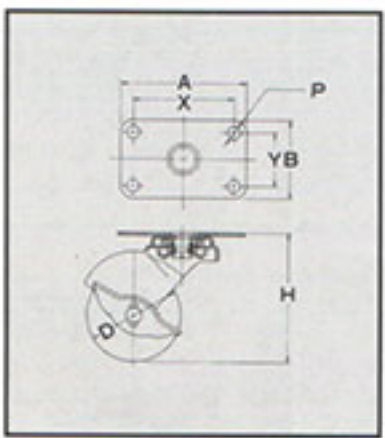
Model No.	D	Load (Kg)	W	N	L	T	Brake
SWS-43N	42	35	37	52	38	8	SWS-43NS

B SERIES FOR FURNITURE USE

BG



BGS

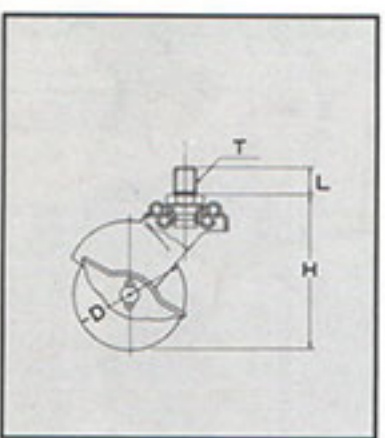


Model No.	Choice of Wheels		Bearings	Load Cap (Kg)	Height H	Dimensions (m/m)		Bolt P	E
	R	PB				A x B	X x Y		
BG-30	R	Rubber	Plain	15	47				14
	PB	Plastic		20					
BG-40	R	Rubber	Plain	25	58	51 x 31	40 x 20	5	24
BGS-40	PB	Plastic		30					
BG-50	R	Rubber	Plain	30	67				24
BGS-50	PB	Plastic		35					

BA



BAS

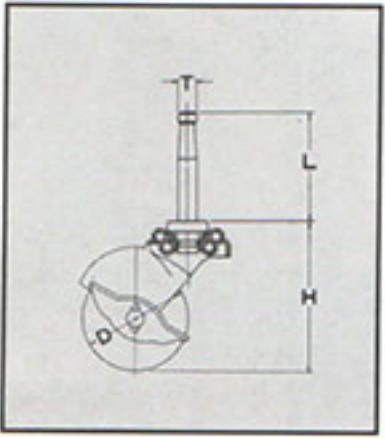


Model No.	Choice of Wheels		Bearings	Load Cap (Kg)	Height H	Length L	Stem Size Ø T	E
	R	PB						
BA-30	R	Rubber	Plain	15	48			14
	PB	Plastic		20				
BA-40	R	Rubber	Plain	25	60	14	SAE 1/2 x 20	24
BAS-40	PB	Plastic		30				
BA-50	R	Rubber	Plain	30	69			24
BAS-50	PB	Plastic		35				

BC



BCS



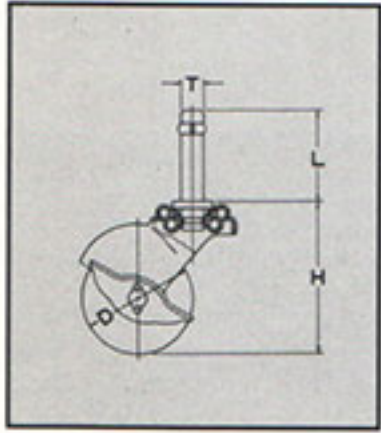
Model No.	Choice of Wheels		Bearings	Load Cap (Kg)	Height H	Length L	Stem Size T	E
	R	PB						
BC-30	R	Rubber	Plain	15	44			14
	PB	Plastic		20				
BC-40	R	Rubber	Plain	25	55	38	8	24
BCS-40	PB	Plastic		30				
BC-50	R	Rubber	Plain	30	64			24
BCS-50	PB	Plastic		35				

B SERIES FOR FURNITURE USE

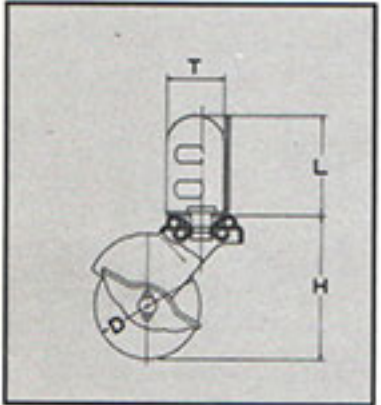
BF



BFS



Model No.	Choice of Wheels		Bearings	Load Cap (Kg)	Height H	Length L	Stem Size T	E
BF-30	R PB	Rubber Plastic	Plain	15 20	44			14
BF-40 BFS-40	R PB	Rubber Plastic	Plain	25 30	55	38	11	24
BF-50 BFS-50	R PB	Rubber Plastic	Plain	30 35	64			24



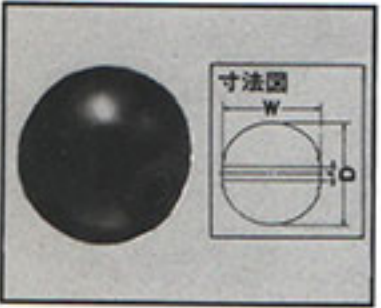
BD



BDS



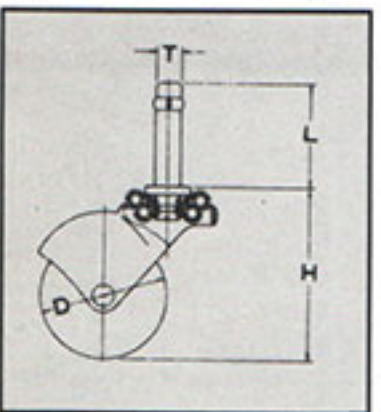
Model No.	Choice of Wheels		Bearings	Load Cap (Kg)	Height H	Length L	Stem Size T	E
BD-30	R PB	Rubber Plastic	Plain	15 20	47			14
BD-40 BDS-40	R PB	Rubber Plastic	Plain	25 30	58	30	55	24
BD-50 BDS-50	R PB	Rubber Plastic	Plain	30 35	67			24



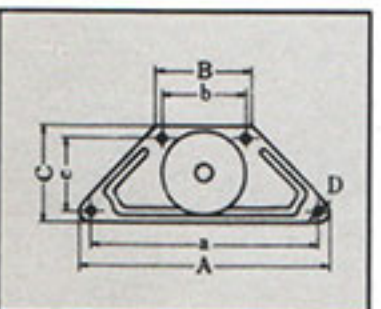
BTF



BTC



Model No.	Choice of Wheels		Bearings	Load Cap (Kg)	Height H	Length L	Plug Size OD	E
BTF-30	R	Rubber	Plain	15	44			14
BTF-40	R	Rubber	Plain	20	55	40	13-16	24
BTF-50	R	Rubber	Plain	25	62		18-19	24



Model No.	Choice of Wheels		Bearings	Load Cap (Kg)	Height H	Dimension (m/m)		E
						A × B × C	Y ₁ × Y ₂	
BTC-30	R	Rubber	Plain	15	44			14
BTC-40	R	Rubber	Plain	20	55	94 × 45 × 34	80 × 40 × 20	24
BTC-50	R	Rubber	Plain	25	62			24

IMPORTANT NOTES

This is to certify that all items shown in this catalogue are genuine products manufactured in JAPAN according to JIS Standard of excellent quality.



OKB – FACTORY – JAPAN



OSAKA KYODO BOEKI LTD.

CENTRAL P. O. BOX 108

OSAKA 530-91, JAPAN

PHONE: OSAKA (06) 768-9021 (Key 4 Lines)

TELEX: J 64662 OSAKA

CABLE ADDRESS: 'KYODOBOEKI' OSAKA

FAX: (06) 761-2094

AGENT & DISTRIBUTOR:



UKAI 優凱(馬)有限公司
(MALAYSIA) SDN. BHD.

No. 7 & 9, Jalan 5/116B
Kuchai Entrepreneurs' Park
Off Jalan Kuchai Lama
58200 Kuala Lumpur, Malaysia
Tel : (603) 7819808/9807/9806/3583
Fax : (603) 7819809